

Low-Density Lipoprotein Cholesterol Lowering With Evolocumab and Outcomes in Patients With Peripheral Artery Disease

Insights From the FOURIER Trial (Further Cardiovascular Outcomes Research With PCSK9 Inhibition in Subjects With Elevated Risk)

BACKGROUND: The PCSK9 (proprotein convertase subtilisin/kexin type 9) inhibitor evolocumab reduced low-density lipoprotein cholesterol and cardiovascular events in the FOURIER trial (Further Cardiovascular Outcomes Research With PCSK9 Inhibition in Subjects With Elevated Risk). We investigated the efficacy and safety of evolocumab in patients with peripheral artery disease (PAD) as well as the effect on major adverse limb events.

METHODS: FOURIER was a randomized trial of evolocumab versus placebo in 27 564 patients with atherosclerotic disease on statin therapy followed for a median of 2.2 years. Patients were identified as having PAD at baseline if they had intermittent claudication and an ankle brachial index of <0.85 or if they had a prior peripheral vascular procedure. The primary end point was a composite of cardiovascular death, myocardial infarction, stroke, hospital admission for unstable angina, or coronary revascularization. The key secondary end point was a composite of cardiovascular death, myocardial infarction, or stroke. An additional outcome of interest was major adverse limb events defined as acute limb ischemia, major amputation, or urgent peripheral revascularization for ischemia.

RESULTS: Three thousand six hundred forty-two patients (13.2%) had PAD (1505 with no prior myocardial infarction or stroke). Evolocumab significantly reduced the primary end point consistently in patients with PAD (hazard ratio [HR] 0.79; 95% confidence interval [CI], 0.66–0.94; $P=0.0098$ and without PAD (HR 0.86; 95% CI, 0.80–0.93; $P=0.0003$; $P_{\text{interaction}}=0.40$). For the key secondary end point, the HRs were 0.73 (0.59–0.91; $P=0.0040$) for those with PAD and 0.81 (0.73–0.90; $P<0.0001$) for those without PAD ($P_{\text{interaction}}=0.41$). Because of their higher risk, patients with PAD had larger absolute risk reductions for the primary end point (3.5% with PAD, 1.6% without PAD) and the key secondary end point (3.5% with PAD, 1.4% without PAD). Evolocumab reduced the risk of major adverse limb events in all patients (HR, 0.58; 95% CI, 0.38–0.88; $P=0.0093$) with consistent effects in those with and without known PAD. There was a consistent relationship between lower achieved low-density lipoprotein cholesterol and lower risk of limb events ($P=0.026$ for the beta coefficient) that extended down to <10 mg/dL.

CONCLUSIONS: Patients with PAD are at high risk of cardiovascular events, and PCSK9 inhibition with evolocumab significantly reduced that risk with large absolute risk reductions. Moreover, lowering of low-density lipoprotein cholesterol with evolocumab reduced the risk of major adverse limb events.

CLINICAL TRIAL REGISTRATION: URL: <https://www.clinicaltrials.gov>. Unique identifier: NCT01764633.

Marc P. Bonaca, MD, MPH
Patrice Nault, MD
Robert P. Giugliano, MD, MS
Anthony C. Keech, MD
Armando Lira Pineda, MD
Estella Kanevsky, MS
Julia Kuder, MA
Sabina A. Murphy, MPH
J. Wouter Jukema, MD, PhD
Basil S. Lewis, MD
Lale Tokgozoglu, MD
Ransi Somaratne, MD
Peter S. Sever, PhD
Terje R. Pedersen, MD
Marc S. Sabatine, MD, MPH

Correspondence to: Marc P. Bonaca, MD, TIMI Study Group, Cardiovascular Division, Brigham and Women's Hospital, 75 Francis St, Boston, MA 02115. E-mail mbonaca@partners.org

Sources of Funding, see page xxx

Key Words: ■ amputation ■ atherosclerosis ■ cholesterol, LDL ■ evolocumab ■ intermittent claudication ■ PCSK9 protein, human ■ peripheral arterial disease

© 2017 American Heart Association, Inc.

Clinical Perspective

What Is New?

- Lowering low-density lipoprotein cholesterol to very low levels (median, 31 mg/dL) with evolocumab in patients with symptomatic lower extremity peripheral artery disease significantly reduces major adverse cardiovascular events.
- Evolocumab significantly reduced major adverse limb events with consistent relative reductions in patients with and without peripheral artery disease.
- These benefits come with no offsetting side effects.
- When looking at the composite of major adverse cardiovascular events/major adverse limb events in patients with symptomatic lower extremity peripheral artery disease and no prior myocardial infarction or stroke, evolocumab resulted in an absolute risk reduction at 2.5 years of 6.3% yielding a number needed to treat of 16.

What Are the Clinical Implications?

- There are few therapies that have been proven to reduce major adverse cardiovascular events risk in patients with lower extremity peripheral artery disease, particularly those without concomitant myocardial infarction or stroke, and even fewer that reduce major adverse limb events.
- Lowering of low-density lipoprotein cholesterol to very low levels reduces major adverse cardiovascular events and major adverse limb events, with benefits of low low-density lipoprotein cholesterol extending to very low levels (<10 mg/dL) and with no offsetting safety concerns.
- These data support reducing low-density lipoprotein cholesterol levels to very low targets should be a core focus of preventive therapy in patients with symptomatic lower extremity peripheral artery disease, including those without concomitant coronary or cerebrovascular disease.

The presence of peripheral artery disease (PAD) is a marker of a malignant vascular phenotype with event rates exceeding those of other stable populations with atherosclerosis, particularly in the setting of polyvascular disease.¹⁻³ Thus, patients with symptomatic PAD are at heightened risk of major adverse cardiovascular events (MACE) including myocardial infarction, stroke, and cardiovascular death.^{4,5} In addition, it is important to note that patients with PAD experience significant morbidity from major adverse limb events (MALE) including acute limb ischemia, urgent peripheral revascularization, and major amputation.⁶⁻⁸

Although lipid-lowering therapy has been shown to reduce MACE in stable patients with coronary heart disease or atherosclerosis risk factors, there have been few well-powered prospective randomized trials of

low-density lipoprotein cholesterol (LDL-C) reduction specifically in patients with PAD.⁹ Moreover, these trials have not specifically looked at the ability of LDL-C lowering to reduce the risk of MALE.^{6,10-13} Last, because PAD has often been used simply as a risk enhancer, little is known about the effect of LDL-C lowering in patients who have PAD without prior myocardial infarction (MI) or stroke.^{8,9,14,15}

The FOURIER trial (Further Cardiovascular Outcomes Research With PCSK9 Inhibition in Subjects With Elevated Risk) was a very large cardiovascular outcomes trial of the PCSK9 (proprotein convertase subtilisin/kexin type 9) inhibitor evolocumab that enrolled patients with atherosclerotic disease, in either the coronary, cerebrovascular, or peripheral arterial bed. FOURIER thus allowed us to test the following hypotheses: (1) patients with PAD would be at greater risk of MACE relative to patients with coronary or cerebrovascular disease without PAD; (2) consistent relative risk reductions in MACE with evolocumab would translate to larger absolute risk reductions in patients with PAD relative to those without; and (3) LDL-C reduction with evolocumab would significantly reduce MALE with benefits extending to very low levels of LDL-C.

METHODS

Study Population

The FOURIER trial design has been previously described.¹⁶ The study was approved by an institutional review committee and all subjects gave informed consent. Patients with clinically evident atherosclerotic cardiovascular disease including prior MI, prior ischemic stroke, or symptomatic PAD were randomly assigned in a 1:1 ratio to evolocumab or placebo. Patients were eligible to qualify with symptomatic PAD if they had intermittent lower extremity claudication and an ankle brachial index <0.85, a history of a peripheral artery revascularization procedure, or a history of amputation attributable to atherosclerotic disease. In addition to the prespecified subgroup based on symptomatic lower extremity PAD, we also examined, as part of a post hoc exploratory analysis, a more restricted population defined as patients with symptomatic lower extremity PAD but with no history of MI or stroke.

End Points

The primary efficacy end point in FOURIER was major cardiovascular events, defined as the composite of cardiovascular death, MI, stroke, hospitalization for unstable angina, or coronary revascularization. The key secondary end point was the composite of cardiovascular (CV) death, MI, or stroke. Other secondary end points included the components of the primary end point. Cardiovascular events were adjudicated by a blinded clinical event committee. Limb outcomes were prospectively ascertained through investigator reporting on dedicated electronic case report form pages and through adverse event forms. Limb outcomes were adjudicated by 2 blinded vascular medicine specialists (Cohen κ for adjudicator agreement, 0.903). Similar to other recent trials evaluating

medical therapies in patients with PAD, MALE was defined as the composite of acute limb ischemia (ALI), major amputation (above the knee or below the knee, excluding forefoot or toe), or urgent revascularization (thrombolysis or urgent vascular intervention for ischemia).^{3,8,14,15,17} ALI required both a clinical presentation consistent with acute ischemia (symptoms consistent with a rapid or sudden decrease in limb perfusion lasting <2 weeks) including findings on physical examination or imaging.¹⁷ In addition, all peripheral artery revascularization and amputation procedures were recorded by the site in the electronic case report form. Analogous to other trials, a combined end point of MACE and MALE was examined.^{14,18} Prespecified safety end points as defined in the primary analysis were included for the PAD subgroup.¹⁹

Statistical Considerations

As part of a prespecified analysis, patients were stratified into those with or without symptomatic lower extremity PAD at baseline. Baseline characteristics of the subgroups were compared by using Wilcoxon rank sum tests for continuous data and χ^2 tests for categorical data. All efficacy analyses of evolocumab versus placebo were done on an intention-to-treat basis (ie, all patients who were randomly assigned were analyzed, irrespective of study drug compliance). Safety analyses included all randomly assigned patients who received at least 1 dose of study treatment and for whom postdose data were available. *P* values for time-to-event analyses are from log-rank tests; Kaplan-Meier event rates were calculated up to 2.5 years. Hazard ratios (HRs) and 95% confidence intervals (CIs) for the effect of evolocumab versus placebo were generated by use of a Cox proportional hazards model, without adjustment (because of the randomized design) but stratifying by region and screening LDL-C values. We tested effect modification by PAD on the efficacy of evolocumab by incorporating interaction terms into Cox models. For the analysis of risk of cardiovascular outcomes comparing patients with and without PAD in the placebo group, a multivariable-adjusted HR was obtained from a Cox model that included the following baseline covariates: age, sex, race, body mass index, hypertension, diabetes mellitus, smoking status, renal dysfunction, congestive heart failure, prior MI, coronary artery bypass grafting surgery or percutaneous coronary intervention, and prior stroke or transient ischemic attack. Proportional hazards assumptions were not violated. A repeated-measures linear mixed-effects model was used to obtain the least-squares means percentage and absolute reduction in LDL-C between the 2 treatment groups. For analyses evaluating the relationship of achieved LDL-C at 1 month and outcomes, we plotted the relationship between end points and achieved LDL cholesterol using a smoothing function applied to the averages of the estimated event rates at each LDL level based on the adjusted Cox models. Analyses were adjusted for significant predictors of LDL-C cholesterol at 1 month after randomization including age, BMI, LDL-C at baseline, male, sex, race randomized in North America, current smoker, and high intensity statin.²⁰ *P* values <0.05 were regarded as significant. We used SAS (version 9.4) for the statistical analyses. The data and study materials will not be made available to other researchers for purposes of reproducing the results or replicating the procedure at this time; however, the entire

FOURIER clinical database has been made available to the US Food and Drug Administration for review and validation.

RESULTS

Populations

Of the 27 564 patients randomized, 3642 (13.2%) had a history of symptomatic lower extremity PAD at baseline (Figure 1). A total of 2067 patients (56.8%) had a history of prior peripheral revascularization, 126 (3.5%) had a history of amputation for vascular cause, and 2518 (69.3%) had an ankle brachial index <0.85 and symptoms of claudication (with some patients having >1 of these factors). Patients with PAD were older, were more frequently female, and had a greater prevalence of risk factors including hypertension, current smoking, renal insufficiency, and diabetes mellitus (Table 1). At baseline, 89% of patients were taking antiplatelet therapy, 69% were taking high-intensity statin therapy, 30% were taking moderate-intensity statin therapy, and 6.6% were taking ezetimibe. Of the PAD subgroup, 1812 patients (49.8%) had a history of MI and 545 (15.0%) had a history of stroke; there were 1505 (41% of those with PAD and 5% of the total population) who had PAD and no prior MI or stroke.

PAD and Risk in Patients Randomized to Placebo

Among patients in the placebo arm, patients with PAD in comparison with patients without PAD had higher

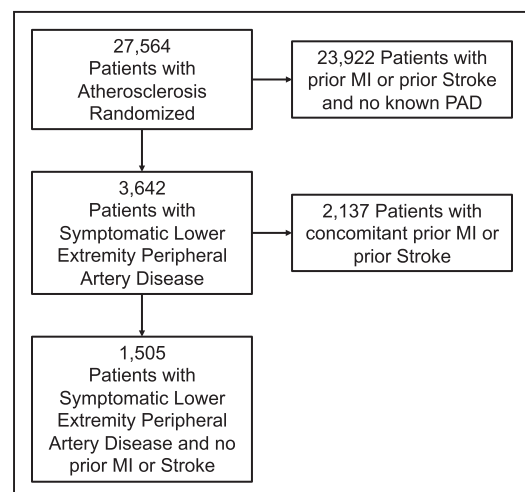


Figure 1. Patients with peripheral artery disease in the FOURIER trial.

Consort diagram describing the subgroup of patients with symptomatic lower extremity peripheral artery disease including those without prior myocardial infarction or stroke. MI indicates myocardial infarction; and PAD, peripheral artery disease. FOURIER, Further Cardiovascular Outcomes Research With PCSK9 Inhibition in Subjects With Elevated Risk.

Table 1. Baseline Characteristics by Presence of Prior PAD

	No PAD N=23 922	PAD N=3642
Age, median (IQR)	63 (56–69)	64 (58–69)
Female sex, n (%)	5743 (24.0)	1026 (28.2)
Body mass index, median (IQR)	29 (26–32)	29 (26–32)
White, n (%)	20 156 (84.3)	3302 (90.7)
History of hypertension, n (%)	18 993 (79.4)	3091 (84.9)
Current smoker, n (%)	6451 (27.0)	1326 (36.4)
Renal insufficiency, n (%)	1323 (5.5)	340 (9.3)
History of atrial fibrillation, n (%)	2022 (8.5)	320 (8.8)
History of diabetes mellitus, n (%)	8501 (35.5)	1580 (43.4)
History of stroke/TIA, n (%)	5101 (21.3)	685 (18.8)
History of myocardial infarction, n (%)	20 539 (85.9)	1812 (49.8)
History of CHF, n (%)	5625 (23.5)	769 (21.1)
Prior CABG, n (%)	4387 (18.4)	839 (23.0)
History of PCI, n (%)	14 029 (58.7)	1444 (39.7)
Peripheral artery disease history		
Symptomatic peripheral artery disease and no prior MI or stroke	0	1505 (41.3)
Current intermittent claudication and ABI <0.85, n (%)	0	2518 (69.3)
Prior peripheral revascularization, n (%)	0	2067 (56.8)
Time from peripheral revascularization, y, median (IQR)	0	3.7 (1.3–7.8)
Limb amputation for vascular cause, n (%)	0	126 (3.5)
Medications at baseline		
High-intensity statin use at baseline, n (%)	16 579 (69.3)	2524 (69.3)
Moderate-intensity statin use at baseline, n (%)	7282 (30.4)	1110 (30.5)
Low-intensity statin use at baseline, n (%)	51 (0.2)	5 (0.1)
Ezetimibe use at baseline, n (%)	1200 (5.0)	240 (6.6)
Antiplatelet therapy, n (%)	22 216 (92.9)	3246 (89.3)
Anticoagulant therapy, n (%)	1805 (7.6)	391 (10.8)
ACE-I or ARB use at baseline, n (%)	18 526 (77.5)	2747 (75.6)

All *P* values <0.05 except history of atrial fibrillation (*P*=0.50) and statin use/intensity (*P*=0.57). Statin dose at baseline missing in 10 (<0.1%) without PAD and 3 (0.1%) with PAD. ABI indicates ankle brachial index; ACE-I, angiotensin-converting enzyme inhibitor; ARB, angiotensin receptor blocker; CABG, coronary artery bypass grafting surgery; CHF, congestive heart failure; IQR, interquartile range; MI, myocardial infarction; PAD, peripheral artery disease; PCI, percutaneous coronary intervention; and TIA, transient ischemic attack.

rates of both the primary end point (Kaplan-Meier rate at 2.5 years: 16.8% versus 12.1%, *P*<0.001) and the key secondary end point (13.0% versus 7.6%, *P*<0.001) (Table I in the online-only Data Supplement, Figure I in

the online-only Data Supplement). After adjusting for baseline differences, patients with PAD remained at significantly higher risk of the primary end point (adjusted HR, 1.57; 95% CI, 1.36–1.80; *P*<0.001) and the key secondary end point (adjusted HR, 1.81; 95% CI, 1.53–2.14; *P*<0.001; Table I in the online-only Data Supplement, Figure I in the online-only Data Supplement).

When stratifying the population with PAD by history of concomitant prior MI or stroke (polyvascular disease), those with polyvascular disease had higher rates of CV death, MI, or stroke than those without (14.9% versus 10.3%, *P*=0.0028; Figure II in the online-only Data Supplement). Patients with PAD and no prior MI or stroke, however, still had higher rates of CV death, MI, or stroke than patients with prior MI or stroke and no symptomatic PAD (10.3% versus 7.6%; adjusted HR, 2.07; 95% CI, 1.42–3.01; *P*=0.0001; Figure II in the online-only Data Supplement). When evaluating the individual components, CV death appeared especially higher (4.4% versus 1.7%, *P*<0.001) in those with PAD and no prior MI or stroke versus patients with no PAD, although rates of MI and stroke were numerically higher as well (Figure IIIA in the online-only Data Supplement).

As expected, patients with symptomatic PAD had higher rates of limb outcomes relative to those without PAD including MALE (2.4% versus 0.2%; adjusted HR, 11.67; 95% CI, 6.25–21.79; *P*<0.001) and the composite of ALI and major amputation (1.5% versus 0.1%; adjusted HR, 7.88; 95% CI, 3.67–16.92; *P*<0.001; Table I in the online-only Data Supplement). Findings were consistent in the subgroup with PAD and no MI or stroke versus patients with no PAD (Figure IIIB in the online-only Data Supplement).

LDL-C Lowering With Evolocumab

The median LDL-C level at baseline among the symptomatic PAD group was 94 mg/dL (interquartile range, 81–112). At 48 weeks, the percentage reduction in LDL-C with evolocumab, relative to placebo, was 59% (least-squares mean percentage, 95% CI, 57–61; *P*<0.001) or a mean absolute reduction of 57 mg/dL (95% CI, 55–60), resulting in a median LDL-C of 31 mg/dL (interquartile range, 19–49; Figure IV in the online-only Data Supplement). The reduction in LDL-C levels was maintained over time (Figure IV in the online-only Data Supplement).

Cardiovascular Efficacy With Evolocumab

In patients with PAD, evolocumab significantly reduced the primary end point by 21% (2.5-year Kaplan-Meier rate, 13.3% versus 16.8%; HR, 0.79; 95% CI, 0.66–0.94; *P*=0.0098; Table 2, Figure 2A) and the composite of CV death, MI, or stroke by 27% (9.5% versus 13.0%; HR, 0.73; 95% CI, 0.59–0.91; *P*=0.0040; Table 2, Figure 2B). The relative risk reductions for both end points

Table 2. Efficacy of Evolocumab in Patients with Peripheral Artery Disease

Outcome	Efficacy Outcomes							
	Symptomatic PAD				Symptomatic PAD Without Prior MI or Stroke			
	Placebo n=1784	Evolocumab n=1858	Hazard Ratio (95% CI)	P Value	Placebo n=748	Evolocumab n=757	Hazard Ratio (95% CI)	P Value
Primary end point	16.8	13.3	0.79 (0.66–0.94)	0.0098	12.6	7.7	0.67 (0.47–0.96)	0.0283
CV death, MI, stroke (MACE)	13.0	9.5	0.73 (0.59–0.91)	0.0040	10.3	5.5	0.57 (0.38–0.88)	0.0095
CVD	3.8	4.0	1.02 (0.71–1.48)		4.4	2.9	0.78 (0.39–1.57)	
MI	7.9	5.2	0.69 (0.52–0.91)		5.7	2.9	0.66 (0.38–1.14)	
Stroke	3.1	1.8	0.59 (0.38–0.92)		2.5	0.7	0.30 (0.11–0.82)	
Ischemic stroke	2.9	1.7	0.57 (0.35–0.90)		2.4	0.5	0.25 (0.08–0.77)	
Coronary revascularization	9.6	7.0	0.79 (0.62–1.01)		6.9	4.0	0.70 (0.44–1.13)	
All death	6.7	6.2	0.92 (0.69–1.23)		6.4	4.9	0.86 (0.51–1.45)	

Outcomes are shown by 2.5-y KM rate (%). CI indicates confidence interval; CV, cardiovascular; CVD, cardiovascular disease; KM, Kaplan-Meier; MACE, major adverse cardiovascular events; MI, myocardial infarction; and PAD, peripheral artery disease.

were consistent in patients with and without PAD ($P_{\text{interaction}}=0.40$ and 0.41 , respectively). However, because of the higher absolute risk in patients with PAD, the absolute risk reductions [ARRs] for both end points were greater in those with PAD versus those without (ARR for the primary end point, 3.5% [95% CI, 0.8%–6.2%] in PAD; 1.6% [95% CI, 0.7%–2.5%] without PAD; ARR for CV death, MI, or stroke 3.5% [95% CI, 1.0%–6.0%] in PAD; 1.4% [95% CI, 0.7%–2.1%] without PAD). Relative and ARR were consistent in the population of patients with PAD and no prior MI or stroke including a 4.9% ARR (95% CI, 1.0%–8.8%) in the primary end point and a 4.8% ARR (95% CI, 1.2%–8.4%) in the composite of CV death, MI, or stroke translating in a number needed to treat (NNT)_{2.5y} of 21 for each (Table 2, Figure VA and VB in the online-only Data Supplement).

MALE Reduction With Evolocumab

Overall, evolocumab reduced the risk of MALE by 42% (0.27% versus 0.45%; HR, 0.58; 95% CI, 0.38–0.88; $P=0.0093$; ARR, 0.18%; Table 3, Figure 3A) and the pattern of efficacy was consistent across all components of MALE (Table 3). The reduction in MALE with evolocumab was consistent regardless of background statin intensity ($P_{\text{interaction}}=0.81$) and remained significant even when restricted to the 19 103 patients on high-intensity statin therapy at baseline (HR, 0.56; 95% CI, 0.33–0.93; $P=0.022$).

The relative risk reduction in MALE with evolocumab was also consistent in those with PAD (HR, 0.63; 95% CI, 0.39–1.03) and those without PAD (HR, 0.37; 95% CI, 0.16–0.88; $P_{\text{interaction}}=0.29$; Figure 3B and 3C). Naturally, given the higher event rates in patients with known PAD, the ARR were greater in those with PAD (1.5% versus 2.4%; ARR, 0.9%) than in those without (0.076% versus 0.16%; ARR, 0.08%). In the 1505 patients with PAD and no prior MI or stroke, reductions in

MALE were consistent (1.3% versus 2.6%; HR, 0.43; 95% CI, 0.19–0.99; ARR, 1.3%; Table 3, Figure VC in the online-only Data Supplement).

Composite Outcome of MACE and MALE in Patients With PAD

Overall, evolocumab reduced the composite of MACE (CV death, MI, or stroke) or MALE (ALI, major amputation, or urgent revascularization) by 21% (HR, 0.79; 95% CI, 0.72–0.87; $P<0.001$; 6.9% versus 8.7%; ARR, 1.8%; NNT, 56; Table 3). The relative risk reduction in MACE or MALE with evolocumab was consistent in those with PAD (HR, 0.73; 95% CI, 0.60–0.88; 10.9% versus 15.0%; ARR, 4.1%; NNT, 25) and those without PAD (HR, 0.80; 95% CI, 0.72–0.89; 6.3% versus 7.8%; ARR, 1.5%; NNT, 67; $P_{\text{interaction}}=0.39$, Figure 4). In the 1505 patients with PAD and no prior MI or stroke, reductions in the composite of MACE or MALE were consistent (HR, 0.52; 95% CI, 0.35–0.76; 6.5% versus 12.8%; ARR, 6.3%; NNT, 16 (Table 3, Figure VI in the online-only Data Supplement).

Safety of Evolocumab in Patients With PAD

There were no differences in the incidence of adverse or serious adverse events with evolocumab relative to placebo in patients with PAD (Table II in the online-only Data Supplement). There was no excess of adverse events leading to treatment discontinuation (1.3% evolocumab versus 1.5% placebo, $P=0.57$).

Association of Achieved LDL-C and Risk of MALE and MACE

Overall, lower achieved LDL-C was associated with a significantly lower risk of MALE with a roughly linear

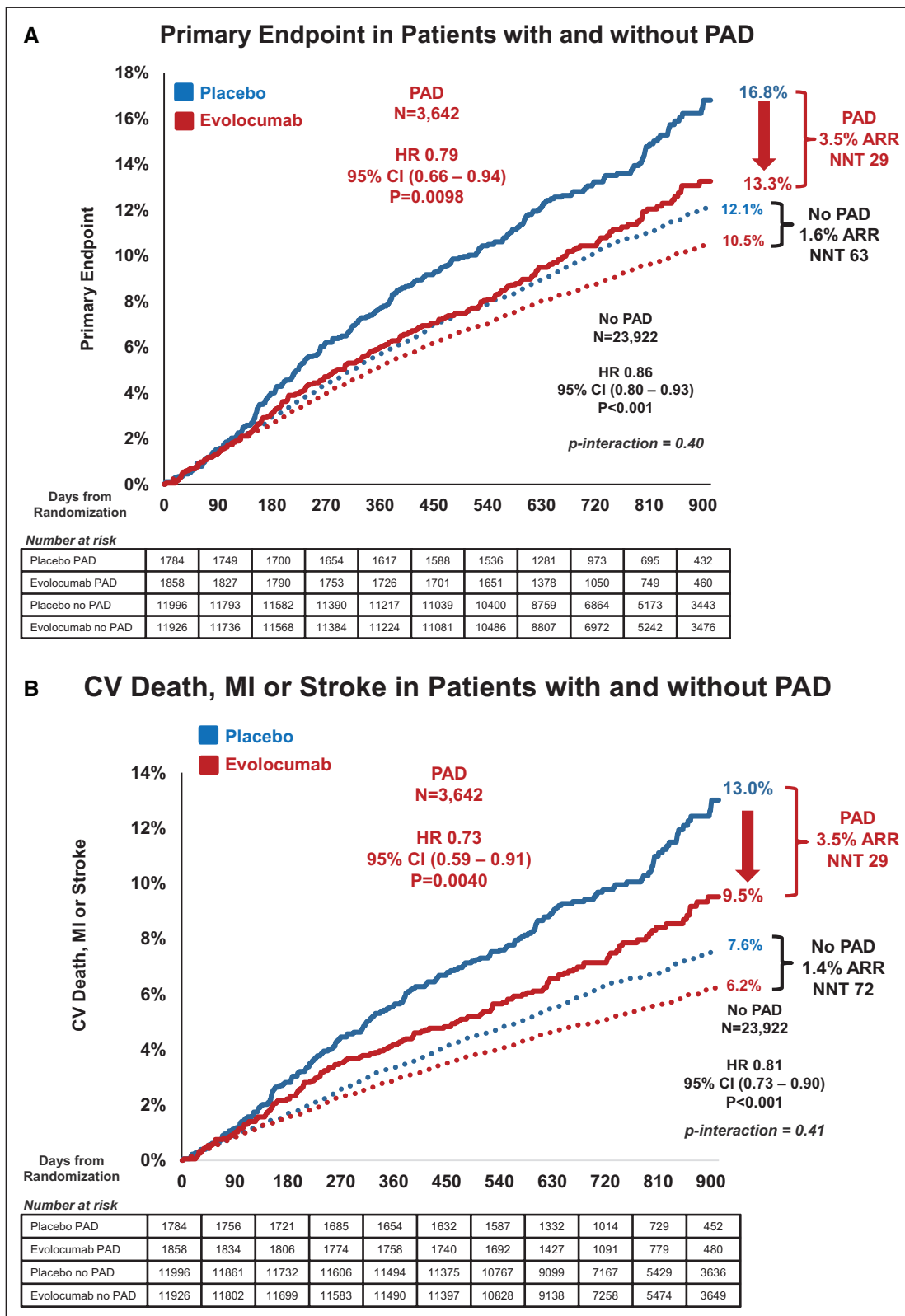


Figure 2. Primary and key secondary end points in patients with and without peripheral artery disease. **A**, The primary composite end point (cardiovascular death, myocardial infarction, stroke, unstable angina, coronary revascularization) by treatment (evolucumab in red, placebo in blue) in patients with (solid lines) and without (dashed lines) symptomatic PAD. **B**, The key secondary composite end point (cardiovascular death, myocardial infarction, stroke) by treatment (evolucumab in red, placebo in blue) in patients with (solid lines) and without (dashed lines) symptomatic PAD. ARR indicates absolute risk reduction; CI, confidence interval; CV, cardiovascular; HR, hazard ratio; MI, myocardial infarction; NNT, number needed to treat; and PAD, peripheral artery disease.

Downloaded from <http://circ.ahajournals.org/> by guest on November 18, 2017

Table 3. Major Adverse Limb Outcomes With Evolocumab Versus Placebo

Outcome	Efficacy Outcomes								
	Overall Population			Patients With PAD			Patients With PAD and No MI or Stroke		
	Placebo n=13 780	Evolocumab n=13 784	Hazard Ratio (95% CI) P=0.0093	Placebo n=1784	Evolocumab n=1858	Hazard Ratio (95% CI) P=0.063	Placebo n=748	Evolocumab n=757	Hazard Ratio (95% CI) P=0.042
MALE*	0.45	0.27	0.58 (0.38–0.88) P=0.0093	2.4	1.5	0.63 (0.39–1.03) P=0.063	2.6	1.3	0.43 (0.19–0.99) P=0.042
ALI or major amputation	0.29	0.17	0.52 (0.31–0.89)	1.5	0.9	0.60 (0.32–1.13)	1.8	0.6	0.33 (0.10–1.01)
ALI	0.24	0.15	0.55 (0.31–0.97)	1.1	0.8	0.73 (0.37–1.48)	1.2	0.6	0.48 (0.15–1.61)
Major amputation	0.05	0.03	0.57 (0.17–1.95)	0.4	0.2	0.41 (0.11–1.57)	0.6	0.1	0.26 (0.03–2.32)
Urgent revascularization	0.21	0.13	0.69 (0.38–1.26)	1.2	0.9	0.75 (0.39–1.45)	1.2	0.9	0.72 (0.25–2.08)
Any peripheral revascularization	2.38	2.59	1.08 (0.92–1.27) P=0.33	12.4	13.3	1.02 (0.84–1.23) P=0.88	12.3	15.1	1.17 (0.87–1.57) P=0.30
CV death, MI, stroke, MALE	8.70	6.91	0.79 (0.72–0.87) P<0.001	15.0	10.9	0.73 (0.60–0.88) P=0.0014	12.8	6.5	0.52 (0.35–0.76) P=0.0006

Outcomes are shown by n and the 2.5-y KM rate (%). AKA indicates above knee amputation; ALI, acute limb ischemia; BKA, below knee amputation; CI, confidence interval; CV, cardiovascular; KM, Kaplan-Meier; MALE, major adverse limb events; MI, myocardial infarction; and PAD, peripheral artery disease.

*MALE is the composite of ALI, major amputation (AKA or BKA), or urgent peripheral revascularization for ischemia.

relationship down to LDL-C of 10 mg/dL ($P=0.026$ for the beta coefficient) with consistent patterns in patients with PAD and those with PAD and no prior MI or stroke (Figure 5, Figure VII in the online-only Data Supplement). There was no apparent inflection or plateau in the relationship between LDL-C and outcome. This pattern was consistent for the broader composite outcome of MACE or MALE overall and for patients with PAD (Figure VIII in the online-only Data Supplement) and patients with PAD and no prior MI or stroke (Figure IX in the online-only Data Supplement).

DISCUSSION

This study confirms that patients with symptomatic lower extremity PAD are at higher risk of both MACE and MALE relative to patients with prior MI or stroke and no PAD. Evolocumab significantly reduced the risk of MACE in patients with symptomatic PAD, including those without prior MI or stroke, and the higher risk in patients with PAD translated into greater ARRs. Furthermore, LDL-C lowering with evolocumab reduced the risk of MALE including ALI and major amputation. Thus, when considering both MACE and MALE, the ARR with LDL-C lowering in patients with PAD was quite robust, with an NNT at 2.5 years of only 25. Last, akin to what has been observed for MACE, there was a consistent lower risk of MALE with lower levels of achieved LDL-C, down to 10 mg/dL.

The higher ischemic risk in patients with symptomatic PAD in comparison with those without has been recognized.^{21,22} This observation, however, is complex because there is heterogeneity in risk within the broad

population of patients with PAD. Those patients with multiple symptomatic territories (eg, PAD and prior MI or prior stroke), called polyvascular disease, are at clearly heightened risk and appear to derive robust reductions in MACE risk from more intensive antithrombotic therapy.^{3,23,24} For patients with symptomatic PAD and no prior MI or stroke, there were fewer proven medical therapies.^{4,5,15,25} The current study builds on observations from the Heart Protection Study and observational analyses to demonstrate that intensive lipid lowering is beneficial in this population and has no offsetting side effects such as bleeding with antithrombotic therapy.^{3,8,14,25}

In the current study, we have shown 2 symptomatic PAD populations: a broad population including those with polyvascular disease, and a restricted population with symptomatic lower extremity PAD who have never experienced an acute atherothrombotic event (MI or stroke). In the current study the benefits of intensive lipid lowering with evolocumab were consistent in both populations. These findings therefore highlight a distinct population characterized by symptomatic PAD as the primary manifestation of atherosclerotic vascular disease where lipid lowering provides robust benefits and supports the hypothesis that the biology of MACE risk in this population is modifiable with LDL-C lowering.

There are limited prior randomized, controlled data on the effect of LDL-C lowering on clinical outcomes in PAD. The Heart Protection Study randomly assigned 20 536 patients with vascular disease with a total cholesterol of at least 3.5 mmol/L (135 mg/dL) to simvastatin 40 mg daily or placebo and included 6748 patients with PAD.²⁶ Over 5 years of follow-up, simvastatin reduced major vascular events relative to pla-

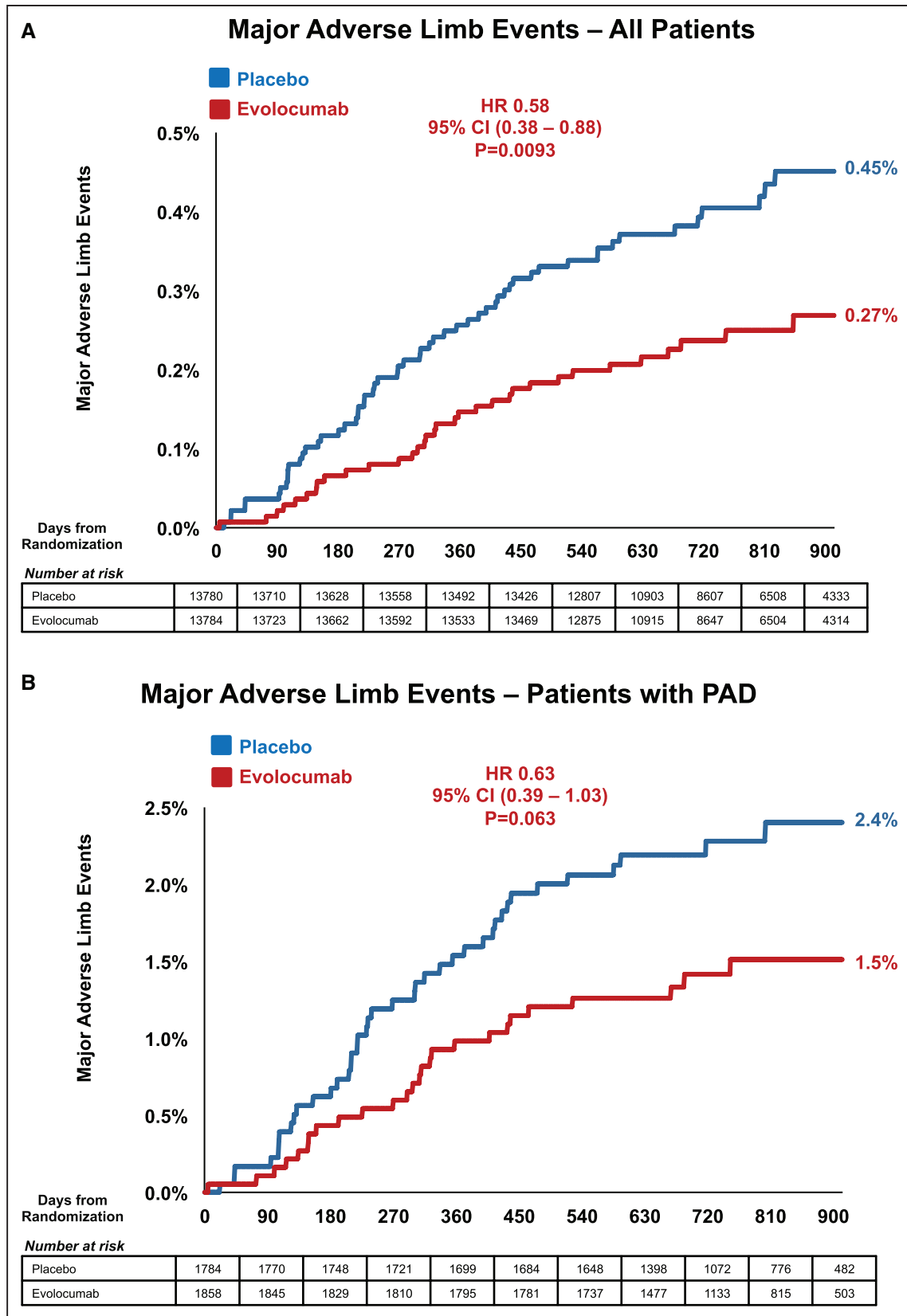


Figure 3. Major adverse limb events.

Major adverse limb events (composite of acute limb ischemia, major amputation, or urgent revascularization) by treatment (evolocumab in red, placebo in blue) in all randomly assigned patients (A), in patients with symptomatic PAD (B), and in patients with no known PAD (C). CI indicates confidence interval; HR, hazard ratio; and PAD, peripheral artery disease.

Downloaded from <http://circ.ahajournals.org/> by guest on November 18, 2017

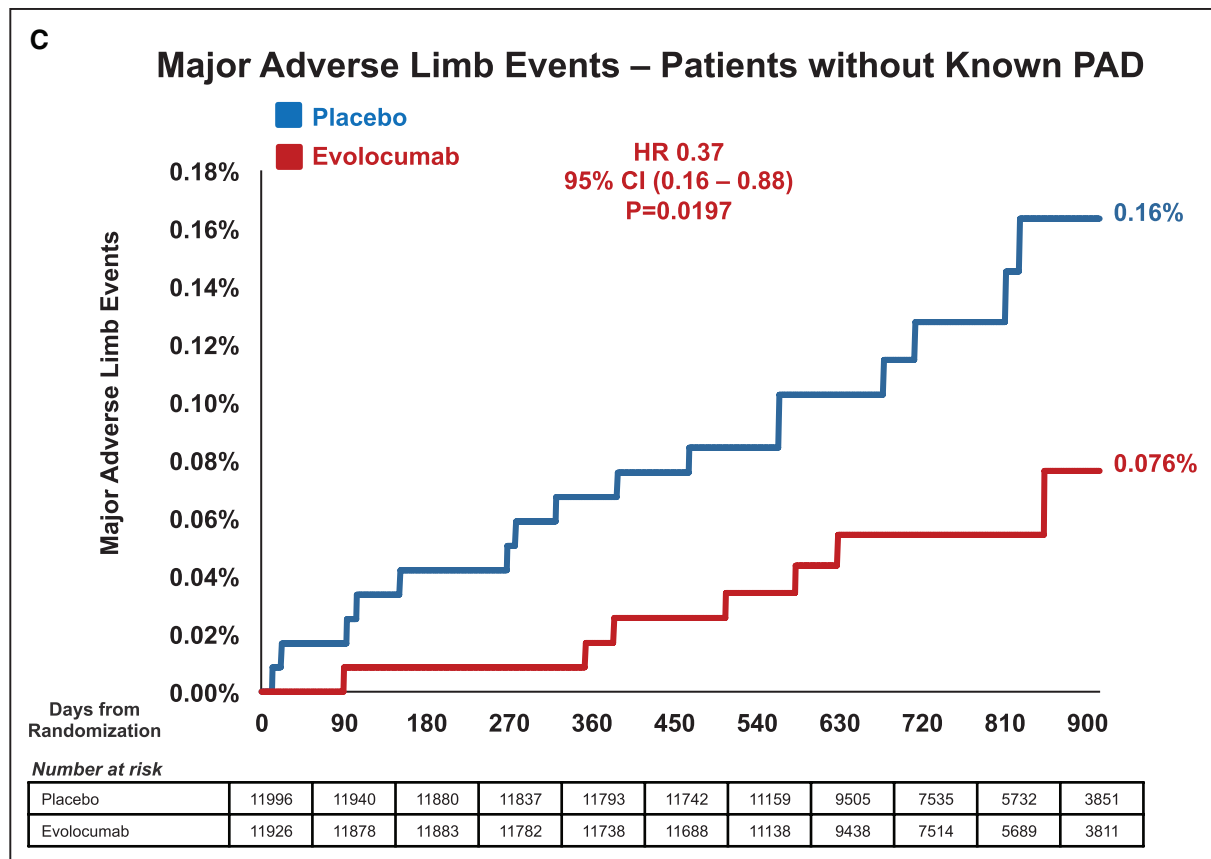


Figure 3 Continued.

cebo with consistent relative risk reductions in those with and without PAD.²⁷ An exploratory outcome of noncoronary vascular intervention (including carotid intervention) was also lower with simvastatin.²⁷ There was no difference in the risk of amputation with simvastatin versus placebo. Observational analyses have reported associations between statin intensity and reductions in MACE in patients with stable PAD or those presenting with critical limb ischemia.^{28–30} Beyond these observations, there are no well-powered randomized studies showing that achieving lower LDL-C or that adding a nonstatin lipid-lowering agent to a statin is beneficial in PAD.⁹ The current study now adds additional data from a well-powered randomized trial that achieving lower LDL-C with a nonstatin agent added to high- or moderate-intensity statin therapy is beneficial in patients with symptomatic lower extremity PAD, including those without prior MI or stroke.⁹

In addition to robust benefits for MACE, the current study is the first randomized trial to demonstrate a benefit for intensive LDL-C lowering for MALE risk. As noted above, the Heart Protection Study noted a reduction in the outcome of noncoronary revascularization procedures; however, this was not specific to etiology and included procedures beyond the lower extremities such as carotid revascularization.²⁷ MALE

was not specifically reported and there was no difference in amputations.²⁷ Prior small studies have described potential symptomatic benefits with statin therapy but have not been powered for MALE.^{10,11,31} A single study has reported a significant 36% reduction in amputations with 5 years of treatment with fenofibrate versus placebo in people with type 2 diabetes mellitus, mostly among individuals with PAD, prior amputation, or neuropathy, and likely via non-LDL-C-mediated mechanisms.³² Analyses from large registries have observed an association between lower amputation rates and statin therapy; however, the potential for residual confounding has remained and the intensity of statin therapy or achieved LDL-C was not reported.^{6,33,34} Smaller observational studies in patients with critical limb ischemia have shown mixed results for the association between statins in limb events with some showing no significant reduction in amputation and others showing improved limb salvage in patients presenting for endovascular therapy for critical limb ischemia.^{29,30,35}

The current study demonstrates that nonstatin LDL-C lowering added to statins reduces MALE in patients with symptomatic atherosclerosis and that the benefits extend to very low achieved LDL-C. This benefit was statistically significant in the overall population with consistent effects in those with and without recognized lower extremity PAD.

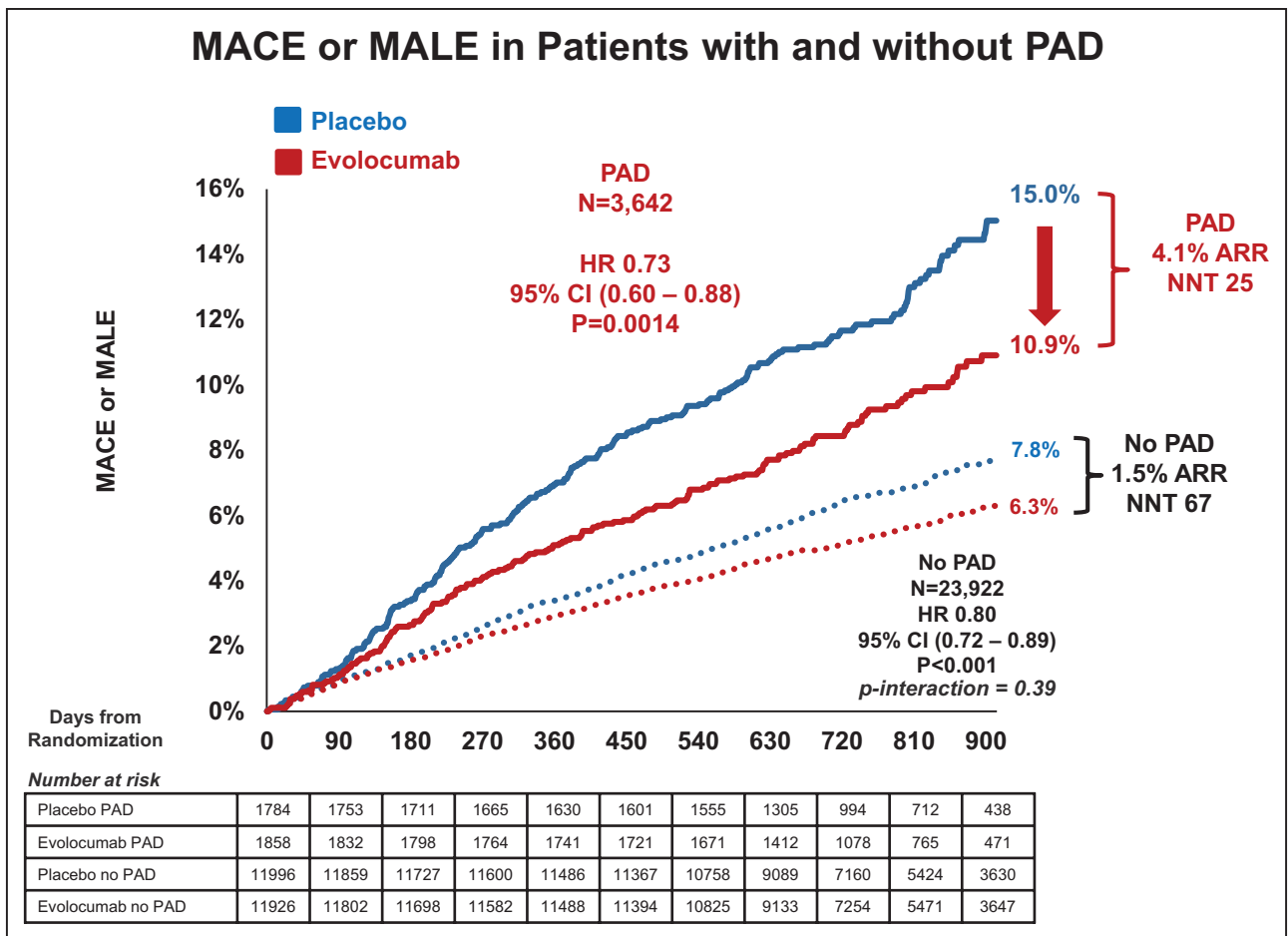


Figure 4. Major adverse cardiovascular and limb events in patients with and without peripheral artery disease. The composite of major adverse cardiovascular events (MACE; cardiovascular death, myocardial infarction, or stroke) and major adverse limb events (MALE; acute limb ischemia, major amputation, or urgent revascularization) by treatment (evolocumab in red, placebo in blue) in patients with (solid lines) and without (dashed lines) symptomatic PAD. ARR indicates absolute risk reduction; CI, confidence interval; HR, hazard ratio; MACE, major adverse cardiovascular event; MALE, major adverse limb event; NNT, number needed to treat; and PAD, peripheral artery disease.

The benefit in those without known PAD reflects both the heightened risk of PAD in patients with coronary or cerebrovascular disease, as well as the underdiagnosis in populations where systematic screening is not conducted. These observations support ascertainment of MALE outcomes in trials of preventive therapies in broader populations with atherosclerosis and not only those with recognized PAD.

The reduction in MALE with evolocumab was consistent for all the components, which have now been established as modifiable limb end points in 3 randomized trials of more intensive antithrombotic therapy and end points that have been adopted as elements of primary or key secondary end points in trials including patients with PAD.^{3,8,14,15} There was no apparent benefit for reducing peripheral revascularizations including elective procedures for claudication as has been described for others such as vorapaxar.⁸ Possible explanations for the lack of benefit for this broad end point include that lipid lowering does not improve symptoms or, alternatively, that it does but over a longer period of exposure and therefore was not seen in the rela-

tively short duration of follow-up (median, 2.2 years) in the current study. Supporting the latter explanation is the observation that benefits for peripheral revascularization and symptoms with vorapaxar were not apparent until almost 2 years of exposure and were not significant until 3 years. Additional longer-term studies are necessary to determine whether long-term reduction in LDL-C will modify disease progression and ameliorate symptoms.

In evaluating the overall benefits of preventive therapies in patients with PAD, recent and ongoing trials (VOYAGER PAD [Efficacy and Safety of Rivaroxaban in Reducing the Risk of Major Thrombotic Vascular Events in Subjects With Symptomatic Peripheral Artery Disease Undergoing Peripheral Revascularization Procedures of the Lower Extremities], NCT02504216) have used a composite end point including both cardiovascular and limb outcomes.¹⁴ This composite provides a global picture of benefit against which harm and cost can be weighed. In the current study, in the broader population of patients with PAD, robust reductions in the composite of MACE or MALE resulted in

Downloaded from http://circ.ahajournals.org/ by guest on November 18, 2017

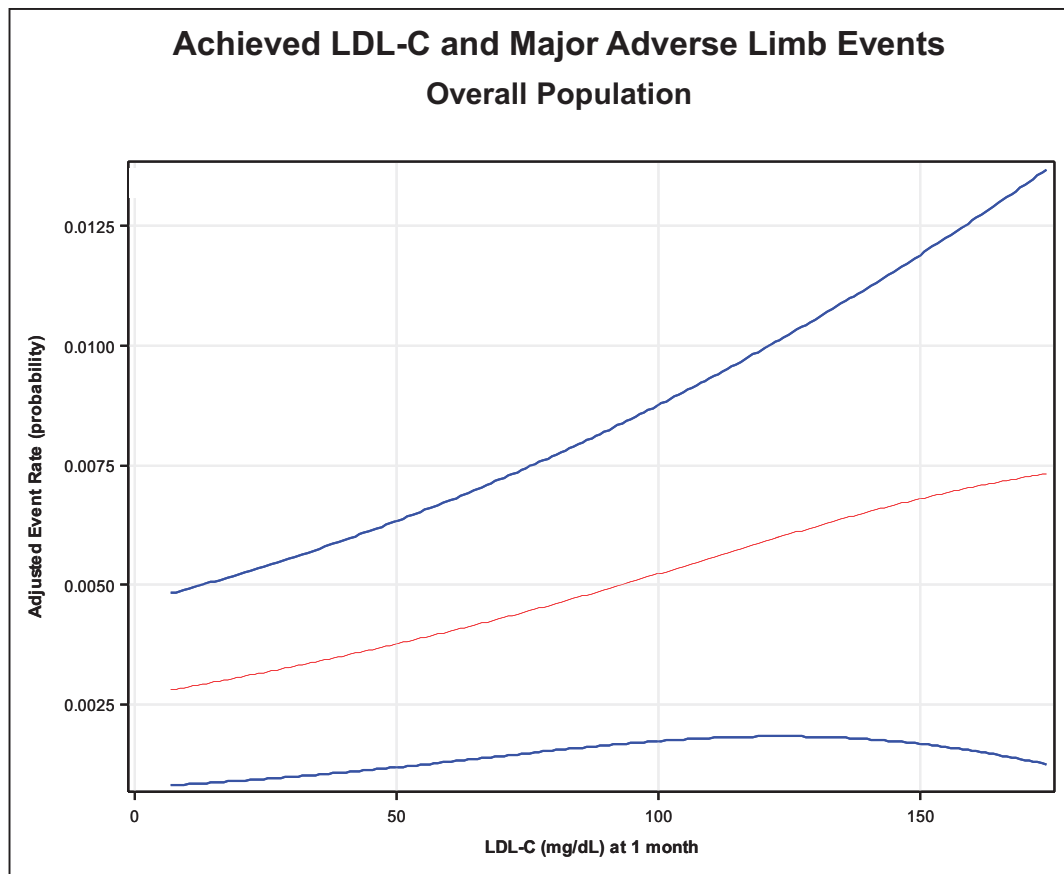


Figure 5. The relationship of achieved LDL-C and major adverse limb events.

Adjusted relationship between achieved LDL-C at 1 month and major adverse limb events (acute limb ischemia, major amputation, or urgent revascularization) in the overall population. $P=0.026$ for the beta coefficient. LDL-C indicates low-density lipoprotein cholesterol.

an ARR at 2.5 years of 4.1% and an NNT of 25. Extending this observation to 5 years, as is typically done for lipid-lowering therapy, translates to a NNT of ≈ 13 . Findings were consistent in patients with PAD and no prior MI or stroke where an ARR of 6.3% translated to a NNT of 16 at 2.5 years or 8 at 5 years. In contrast to antithrombotic therapies, this benefit comes with no safety trade-off in terms of bleeding or other adverse events. These considerations may be important to clinicians in personalizing intensive therapies to their patients.

Limitations

There are several limitations to the current analysis. First, subgroup analyses are generally used to evaluate for consistency of findings with the overall trial and therefore may be underpowered for efficacy and safety outcomes. In the current analysis, the PAD subgroup was adequately powered to demonstrate statistically significant benefits for the primary end point and key secondary. Consistent with the overall trial, there was no significant reduction in CV death with evolocumab at 2.5 years, a benefit that generally has emerged only with longer follow-up in lipid-lowering trials.^{26,36–38} The power to detect differences

in rare safety events may have been limited by the size of the PAD subgroup; however, the pattern of safety was consistent with the overall trial. Limb outcomes were collected on broad electronic case report form pages for peripheral outcomes and not focused specifically on ALI. This may have resulted in underascertainment of ALI outcomes but would not bias treatment effects. Finally, relationships between achieved LDL-C and outcome were not randomized and, although adjusted for confounders, the potential for residual confounding remains and should be recognized.

Conclusions

Patients with symptomatic lower extremity PAD are at heightened risk of major adverse cardiovascular and limb events. Evolocumab added to statin therapy significantly and robustly reduces the risk of MACE, even in patients with PAD and no prior MI or stroke. Likewise, the addition of evolocumab to a statin reduced the risk of MALE, and the relationship between achieved LDL-C and lower risk of limb events extended down to very low achieved levels of LDL. These benefits come with no offsetting safety concerns. Thus, LDL-C reduction to very low levels should

be considered in patients with PAD, regardless of a history of MI or stroke, to reduce the risk of MACE and MALE.

SOURCES OF FUNDING

This study was supported by a grant to Brigham and Women's Hospital from Amgen.

DISCLOSURES

Dr Bonaca reports consulting fees from Aralez, AstraZeneca, Merck, Bayer, and Roche Diagnostics. Dr Nault reports research grant support through Q&T Recherche Outaouais from Amgen, AstraZeneca, Bayer, GlaxoSmithKline, and Merck and lecture fees from Amgen and Medtronic. Dr Giugliano reports receiving grant support (through Brigham and Women's Hospital) from Amgen, Daiichi Sankyo, and Merck, and honoraria from continuing medical education programs or consulting from Amarin, American College of Cardiology, Amgen, Angel Med, Beckman-Coulter, Boehringer Ingelheim, Bristol-Myers Squibb, CVS Caremark, Daiichi Sankyo, GlaxoSmithKline, Janssen, Lexicon, Merck, Portola, Pfizer, Regeneron, Sanofi-Aventis, St. Jude, and Stealth Peptides. Dr Keech reports receiving speakers' honoraria, advisory board fees, or research funding from Abbott, Amgen, Astra-Zeneca, Mylan, Novartis, Pfizer, Sanofi-Regeneron, and the Juvenile Diabetes Research Foundation and the National Health and Medical Research Council of Australia. Dr Pineda reports employment at Amgen. Dr Jukema reports research grants from and was a speaker (with or without lecture fees) at continuing medical education-accredited meetings sponsored by Amgen, Anthera, Biotronik, Daiichi Sankyo, Lilly, Merck-Schering-Plow, Pfizer, Sanofi Aventis, The Medicine Company, the Netherlands Heart Foundation, CardioVascular Research the Netherlands, the Netherlands Heart Institute, and the European Community Framework KP7 Program. Dr Lewis reports research grant support through Lady Davis Carmel Medical Center from Amgen and Pfizer, and consultant/advisory board fees from Amgen and Pfizer. Dr Tokgozoglu reports advisory board membership and honoraria for lectures from Amgen, Astra, Pfizer, MSD, Mylan, Recordati, Novartis, Sanofi, and Servier. Dr Somaratne reports being an employee and stockholder of Amgen, Inc., and is identified as an inventor on at least 1 pending patent application owned by Amgen, Inc., relating to evolocumab. Dr Pedersen reports consulting fees and was a speaker for Amgen, Sanofi Regeneron, and Merck. Dr Sabatine reports research grant support through Brigham and Women's Hospital from Abbott Laboratories; Amgen; AstraZeneca; Critical Diagnostics; Daiichi-Sankyo; Eisai; Genzyme; Gilead; GlaxoSmithKline; Intarcia; Janssen Research and Development; Medicines Company; MedImmune; Merck; Novartis; Poxel; Pfizer; Roche Diagnostics; Takeda. Dr Sabatine reports consulting for: Alnylam; Amgen; AstraZeneca; Bristol-Myers Squibb; CVS Caremark; Esperion; Intarcia; Ionis; Janssen Research and Development; Medicines Company; MedImmune; Merck; MyoKardia; and Novartis. The other authors report no conflicts.

AFFILIATIONS

Thrombolysis In Myocardial Infarction Study Group, Brigham and Women's Hospital Heart & Vascular Center, Boston, MA (M.P.B., R.P.G., E.K., J.K., M.S.S.). McGill University, Montreal,

and Division of Vascular and Endovascular Surgery, Centre Intégré de la santé et des services sociaux de l'Outaouais, Gatineau, Canada (P.N.). Sydney Medical School, National Health and Medical Research Council Clinical Trials Centre, University of Sydney, Australia (A.C.K.). Amgen, Thousand Oaks, CA (A.L.P., R.S.). Department of Cardiology, Leiden University Medical Center, the Netherlands (J.W.J.). Lady Davis Carmel Medical Center and Ruth and Bruce Rappaport School of Medicine, Technion-Israel Institute of Technology, Haifa, Israel (B.S.L.). Department of Cardiology, Hacettepe University, Ankara, Turkey (L.T.). International Centre for Circulatory Health, National Heart and Lung Institute, Imperial College London, UK (P.S.S.). Oslo University Hospital, Ullevål and Medical Faculty, University of Oslo, Norway (T.R.P.).

FOOTNOTES

Received October 13, 2017; accepted October 25, 2017.

The online-only Data Supplement is available with this article at <http://circ.ahajournals.org/lookup/suppl/doi:10.1161/CIRCULATIONAHA.117.032235/-/DC1>.

Circulation is available at <http://circ.ahajournals.org>.

REFERENCES

- Suárez C, Zeymer U, Limbourg T, Baumgartner I, Cacoub P, Poldermans D, Röther J, Bhatt DL, Steg PG; REACH Registry Investigators. Influence of polyvascular disease on cardiovascular event rates. Insights from the REACH Registry. *Vasc Med*. 2010;15:259–265. doi: 10.1177/1358863X10373299.
- Criqui MH, Aboyans V. Epidemiology of peripheral artery disease. *Circ Res*. 2015;116:1509–1526. doi: 10.1161/CIRCRESAHA.116.303849.
- Bonaca MP, Bhatt DL, Storey RF, Steg PG, Cohen M, Kuder J, Goodrich E, Nicolau JC, Parkhomenko A, López-Sendón J, Dellborg M, Dalby A, Špinar J, Aylward P, Corbalán R, Abola MTB, Jensen EC, Held P, Braunwald E, Sabatine MS. Ticagrelor for prevention of ischemic events after myocardial infarction in patients with peripheral artery disease. *J Am Coll Cardiol*. 2016;67:2719–2728. doi: 10.1016/j.jacc.2016.03.524.
- Aboyans V, Ricco JB, Bartelink MEL, Björck M, Brodmann M, Cohnert T, Collet JP, Czerny M, De Carlo M, Debus S, Espinola-Klein C, Kahan T, Kownator S, Mazzolai L, Naylor AR, Roffi M, Rother J, Sprynger M, Tendera M, Tepe G, Venermo M, Vlachopoulos C, Desormais I. 2017 ESC Guidelines on the Diagnosis and Treatment of Peripheral Arterial Diseases, in collaboration with the European Society for Vascular Surgery (ESVS): Document covering atherosclerotic disease of extracranial carotid and vertebral, mesenteric, renal, upper and lower extremity arteries. Endorsed by: the European Stroke Organization (ESO), The Task Force for the Diagnosis and Treatment of Peripheral Arterial Diseases of the European Society of Cardiology (ESC) and of the European Society for Vascular Surgery (ESVS) [published online ahead of print August 26, 2017]. *Eur Heart J*. doi: 10.1093/eurheartj/ehx095. <https://academic.oup.com/eurheartj/article-lookup/doi/10.1093/eurheartj/ehx095>
- Gerhard-Herman MD, Gornik HL, Barrett C, Barshes NR, Corriere MA, Drachman DE, Fleisher LA, Fowkes FG, Hamburg NM, Kinlay S, Lookstein R, Misra S, Mureebe L, Olin JW, Patel RA, Regensteiner JG, Schanzer A, Shishehbor MH, Stewart KJ, Treat-Jacobson D, Walsh ME. 2016 AHA/ACC Guideline on the Management of Patients With Lower Extremity Peripheral Artery Disease: A Report of the American College of Cardiology/American Heart Association Task Force on Clinical Practice Guidelines. *Circulation*. 2017;135:e726–e779. doi: 10.1161/CIR.0000000000000471.
- Kumbhani DJ, Steg PG, Cannon CP, Eagle KA, Smith SC Jr, Goto S, Ohman EM, Elbez Y, Sritara P, Baumgartner I, Banerjee S, Creager MA, Bhatt DL; REACH Registry Investigators. Statin therapy and long-term adverse limb outcomes in patients with peripheral artery disease: insights from the REACH registry. *Eur Heart J*. 2014;35:2864–2872. doi: 10.1093/eurheartj/ehu080.
- Jones WS, Baumgartner I, Hiatt WR, Heizer G, Conte MS, White CJ, Berger JS, Held P, Katona BG, Mahaffey KW, Norgren L, Blomster J, Millégarð M, Reist C, Patel MR, Fowkes FG; International Steering Com-

- mittee and Investigators of the EUCLID Trial. Ticagrelor compared with clopidogrel in patients with prior lower extremity revascularization for peripheral artery disease. *Circulation*. 2017;135:241–250. doi: 10.1161/CIRCULATIONAHA.116.025880.
8. Bonaca MP, Scirica BM, Creager MA, Olin J, Bounameaux H, Dellborg M, Lamp JM, Murphy SA, Braunwald E, Morrow DA. Vorapaxar in patients with peripheral artery disease: results from TRA2(degrees) P-TIMI 50. *Circulation*. 2013;127:1522–1529. doi: 10.1161/CIRCULATIONAHA.112.000679.
 9. Aung PP, Maxwell HG, Jepson RG, Price JF, Leng GC. Lipid-lowering for peripheral arterial disease of the lower limb. *Cochrane Database Syst Rev*. 2007;(4):CD000123.
 10. Aronow WS, Nayak D, Woodworth S, Ahn C. Effect of simvastatin versus placebo on treadmill exercise time until the onset of intermittent claudication in older patients with peripheral arterial disease at six months and at one year after treatment. *Am J Cardiol*. 2003;92:711–712.
 11. Mohler ER III, Hiatt WR, Creager MA. Cholesterol reduction with atorvastatin improves walking distance in patients with peripheral arterial disease. *Circulation*. 2003;108:1481–1486. doi: 10.1161/01.CIR.0000090686.57897.F5.
 12. Spring S, Simon R, van der Loo B, Kovacevic T, Brockes C, Rousson V, Amann-Vesti B, Koppensteiner R. High-dose atorvastatin in peripheral arterial disease (PAD): effect on endothelial function, intima-media-thickness and local progression of PAD. An open randomized controlled pilot trial. *Thromb Haemost*. 2008;99:182–189. doi: 10.1160/TH07-04-0265.
 13. Schanzer A, Hevelone N, Owens CD, Beckman JA, Belkin M, Conte MS. Statins are independently associated with reduced mortality in patients undergoing infrainguinal bypass graft surgery for critical limb ischemia. *J Vasc Surg*. 2008;47:774–781. doi: 10.1016/j.jvs.2007.11.056.
 14. Anand S; COMPASS Investigators. COMPASS PAD-Cardiovascular Outcomes for People using Anticoagulation StrategieS trial: Results in Patients with Peripheral Artery Disease. *European Society of Cardiology Hotline*. 2017. <http://congress365.escardio.org/Presentation/162172#.WgCm1o9SzmE>. Accessed November 7, 2017.
 15. Hiatt WR, Fowkes FG, Heizer G, Berger JS, Baumgartner I, Held P, Katona BG, Mahaffey KW, Norgren L, Jones WS, Blomster J, Millegård M, Reist C, Patel MR; EUCLID Trial Steering Committee and Investigators. Ticagrelor versus clopidogrel in symptomatic peripheral artery disease. *N Engl J Med*. 2017;376:32–40. doi: 10.1056/NEJMoa1611688.
 16. Sabatine MS, Giugliano RP, Keech A, Honarpour N, Wang H, Liu T, Wasserman SM, Scott R, Sever PS, Pedersen TR. Rationale and design of the Further cardiovascular Outcomes Research with PCSK9 Inhibition in subjects with Elevated Risk trial. *Am Heart J*. 2016;173:94–101. doi: 10.1016/j.ahj.2015.11.015.
 17. Bonaca MP, Gutierrez JA, Creager MA, Scirica BM, Olin J, Murphy SA, Braunwald E, Morrow DA. Acute limb ischemia and outcomes with vorapaxar in patients with peripheral artery disease: results from the Trial to Assess the Effects of Vorapaxar in Preventing Heart Attack and Stroke in Patients With Atherosclerosis-Thrombolysis in Myocardial Infarction 50 (TRA2°P-TIMI 50). *Circulation*. 2016;133:997–1005. doi: 10.1161/CIRCULATIONAHA.115.019355.
 18. Eikelboom JW, Connolly SJ, Bosch J, Dagenais GR, Hart RG, Shestakovska O, Diaz R, Alings M, Lonn EM, Anand SS, Widimsky P, Hori M, Avezum A, Piegas LS, Branch KRH, Probstfield J, Bhatt DL, Zhu J, Liang Y, Maggioni AP, Lopez-Jaramillo P, O'Donnell M, Kakkor AK, Fox KAA, Parkhomenko AN, Ertl G, Störk S, Keltai M, Ryden L, Pogosova N, Dans AL, Lanas F, Commerford PJ, Torp-Pedersen C, Guzik TJ, Verhamme PB, Vinereanu D, Kim JH, Tonkin AM, Lewis BS, Felix C, Yusuf K, Steg PG, Metsarinne KP, Cook Bruns N, Misselwitz F, Chen E, Leong D, Yusuf S; COMPASS Investigators. Rivaroxaban with or without aspirin in stable cardiovascular disease. *N Engl J Med*. 2017;377:1319–1330. doi: 10.1056/NEJMoa1709118.
 19. Sabatine MS, Giugliano RP, Pedersen TR. Evolocumab in patients with cardiovascular disease. *N Engl J Med*. 2017;377:787–788. doi: 10.1056/NEJMc1708587.
 20. Giugliano RP, Pedersen TR, Park JG, De Ferrari GM, Gaciong Z, Ceska R, Toth K, Gouni-Berthold I, Lopez-Miranda J, Schiele F, Mach F, Ott BR, Kanevsky E, Pineda AL, Somaratne R, Wasserman SM, Keech AC, Sever PS, Sabatine MS, FOURIER Investigators. Clinical efficacy and safety of achieving very low LDL-cholesterol concentrations with the PCSK9 inhibitor evolocumab: a prespecified secondary analysis of the FOURIER trial [published online ahead of print August 25, 2017]. *Lancet*. doi: 10.1016/S0140-6736(17)32290-0. [http://www.thelancet.com/journals/lancet/article/PIIS0140-6736\(17\)32290-0/fulltext](http://www.thelancet.com/journals/lancet/article/PIIS0140-6736(17)32290-0/fulltext)
 21. Cacoub PP, Bhatt DL, Steg PG, Topol EJ, Creager MA; CHARISMA Investigators. Patients with peripheral arterial disease in the CHARISMA trial. *Eur Heart J*. 2009;30:192–201. doi: 10.1093/eurheartj/ehn534.
 22. Bhatt DL, Peterson ED, Harrington RA, Ou FS, Cannon CP, Gibson CM, Kleiman NS, Brindis RG, Peacock WF, Brener SJ, Menon V, Smith SC Jr, Polack CV Jr, Gibler WB, Ohman EM, Roe MT, CRUSADE Investigators. Prior polyvascular disease: risk factor for adverse ischaemic outcomes in acute coronary syndromes. *Eur Heart J*. 2009;30:1195–1202.
 23. Franzone A, Piccolo R, Gargiulo G, Ariotti S, Marino M, Santucci A, Baldo A, Magnani G, Moschovitis A, Windecker S, Valgimigli M. Prolonged vs short duration of dual antiplatelet therapy after percutaneous coronary intervention in patients with or without peripheral arterial disease: a subgroup analysis of the PRODIGY Randomized Clinical Trial. *JAMA Cardiol*. 2016;7:796–803.
 24. Chen DC, Singh GD, Armstrong EJ, Waldo SW, Laird JR, Amsterdam EA. Long-term comparative outcomes of patients with peripheral artery disease with and without concomitant coronary artery disease. *Am J Cardiol*. 2017;119:1146–1152. doi: 10.1016/j.amjcard.2016.12.023.
 25. Warfarin Antiplatelet Vascular Evaluation Trial Investigators, Anand S, Yusuf S, Xie C, Pogue J, Eikelboom J, Budaj A, Sussex B, Liu L, Guzman R, Cina C, Crowell R, Keltai M, Gosselin G. Oral anticoagulant and antiplatelet therapy and peripheral arterial disease. *N Engl J Med*. 2007;357:217–227.
 26. Collins R, Armitage J, Parish S, Sleight P, Peto R; Heart Protection Study Collaborative Group. Effects of cholesterol-lowering with simvastatin on stroke and other major vascular events in 20536 people with cerebrovascular disease or other high-risk conditions. *Lancet*. 2004;363:757–767. doi: 10.1016/S0140-6736(04)15690-0.
 27. Heart Protection Study Collaborative Group. Randomized trial of the effects of cholesterol-lowering with simvastatin on peripheral vascular and other major vascular outcomes in 20,536 people with peripheral arterial disease and other high-risk conditions. *J Vasc Surg*. 2007;45:645–654; discussion 653–654.
 28. Foley TR, Singh GD, Kokkinidis DG, Choy HK, Pham T, Amsterdam EA, Rutledge JC, Waldo SW, Armstrong EJ, Laird JR. High-intensity statin therapy is associated with improved survival in patients with peripheral artery disease. *J Am Heart Assoc*. 2017;6:e005699. doi: 10.1161/JAHA.117.005699.
 29. Stavroulakis K, Borowski M, Torsello G, Bisdas T; CRITISCH collaborators. Association between statin therapy and amputation-free survival in patients with critical limb ischemia in the CRITISCH registry. *J Vasc Surg*. 2017;66:1534–1542. doi: 10.1016/j.jvs.2017.05.115.
 30. Westin GG, Armstrong EJ, Bang H, Yeo KK, Anderson D, Dawson DL, Pevec WC, Amsterdam EA, Laird JR. Association between statin medications and mortality, major adverse cardiovascular event, and amputation-free survival in patients with critical limb ischemia. *J Am Coll Cardiol*. 2014;63:682–690. doi: 10.1016/j.jacc.2013.09.073.
 31. Giri J, McDermott MM, Greenland P, Guralnik JM, Criqui MH, Liu K, Ferrucci L, Green D, Schneider JR, Tian L. Statin use and functional decline in patients with and without peripheral arterial disease. *J Am Coll Cardiol*. 2006;47:998–1004. doi: 10.1016/j.jacc.2005.10.052.
 32. Rajamani K, Colman PG, Li LP, Best JD, Voysey M, D'Emden MC, Laakso M, Baker JR, Keech AC; FIELD study investigators. Effect of fenofibrate on amputation events in people with type 2 diabetes mellitus (FIELD study): a prespecified analysis of a randomised controlled trial. *Lancet*. 2009;373:1780–1788. doi: 10.1016/S0140-6736(09)60698-X.
 33. Dosluoglu HH, Davari-Farid S, Pourafkari L, Harris LM, Nader ND. Statin use is associated with improved overall survival without affecting patency and limb salvage rates following open or endovascular revascularization. *Vasc Med*. 2014;19:86–93. doi: 10.1177/1358863X14528271.
 34. Feringa HH, Karagiannis SE, van Wanang VH, Boersma E, Schouten O, Bax JJ, Poldermans D. The effect of intensified lipid-lowering therapy on long-term prognosis in patients with peripheral arterial disease. *J Vasc Surg*. 2007;45:936–943. doi: 10.1016/j.jvs.2007.01.024.
 35. Aiello FA, Khan AA, Meltzer AJ, Gallagher KA, McKinsey JF, Schneider DB. Statin therapy is associated with superior clinical outcomes after endovascular treatment of critical limb ischemia. *J Vasc Surg*. 2012;55:371–379; discussion 380. doi: 10.1016/j.jvs.2011.08.044.
 36. Collins R, Reith C, Emberson J, Armitage J, Baigent C, Blackwell L, Blumenthal R, Danesh J, Smith GD, DeMets D, Evans S, Law M, MacMahon S, Martin S, Neal B, Poulter N, Preiss D, Ridker P, Roberts I, Rodgers A, Sandercock P, Schulz K, Sever P, Simes J, Smeeth L, Wald N, Yusuf S, Peto R. Interpretation of the evidence for the efficacy and safety of statin therapy. *Lancet*. 2016;388:2532–2561. doi: 10.1016/S0140-6736(16)31357-5.
 37. Sabatine MS, Giugliano RP, Wiviott SD, Raal FJ, Blom DJ, Robinson J, Balantyne CM, Somaratne R, Legg J, Wasserman SM, Scott R, Koren MJ, Stein EA; Open-Label Study of Long-Term Evaluation against LDL Cholesterol (OSLER) Investigators. Efficacy and safety of evolocumab in reducing lipids and cardiovascular events. *N Engl J Med*. 2015;372:1500–1509. doi: 10.1056/NEJMoa1500858.
 38. Randomised trial of cholesterol lowering in 4444 patients with coronary heart disease: the Scandinavian Simvastatin Survival Study (4S). *Lancet*. 1994;344:1383–1389.

Low-Density Lipoprotein Cholesterol Lowering With Evolocumab and Outcomes in Patients With Peripheral Artery Disease: Insights From the FOURIER Trial (Further Cardiovascular Outcomes Research With PCSK9 Inhibition in Subjects With Elevated Risk)

Marc P. Bonaca, Patrice Nault, Robert P. Giugliano, Anthony C. Keech, Armando Lira Pineda, Estella Kanevsky, Julia Kuder, Sabina A. Murphy, J. Wouter Jukema, Basil S. Lewis, Lale Tokgozoglul, Ransi Somaratne, Peter S. Sever, Terje R. Pedersen and Marc S. Sabatine

Circulation. published online November 13, 2017;

Circulation is published by the American Heart Association, 7272 Greenville Avenue, Dallas, TX 75231

Copyright © 2017 American Heart Association, Inc. All rights reserved.

Print ISSN: 0009-7322. Online ISSN: 1524-4539

The online version of this article, along with updated information and services, is located on the World Wide Web at:

<http://circ.ahajournals.org/content/early/2017/11/10/CIRCULATIONAHA.117.032235>

Data Supplement (unedited) at:

<http://circ.ahajournals.org/content/suppl/2017/11/10/CIRCULATIONAHA.117.032235.DC1>

Permissions: Requests for permissions to reproduce figures, tables, or portions of articles originally published in *Circulation* can be obtained via RightsLink, a service of the Copyright Clearance Center, not the Editorial Office. Once the online version of the published article for which permission is being requested is located, click Request Permissions in the middle column of the Web page under Services. Further information about this process is available in the [Permissions and Rights Question and Answer](#) document.

Reprints: Information about reprints can be found online at:
<http://www.lww.com/reprints>

Subscriptions: Information about subscribing to *Circulation* is online at:
<http://circ.ahajournals.org/subscriptions/>

**LDL Cholesterol Lowering with Evolocumab and Outcomes in Patients with Peripheral
Artery Disease: Insights from the FOURIER Trial**

SUPPLEMENTAL MATERIAL

Supplemental Methods

We plotted the relationship between endpoints and achieved LDL cholesterol using a smoothing function applied to the averages of estimated event rates at each LDL level based on the adjusted Cox models. Analyses were adjusted for significant ($p < 0.05$) predictors of LDL-C cholesterol at 1 month after randomization including age, BMI, LDL-C at baseline, male sex, race, randomized in North America, current smoker, and high intensity statin.

Supplemental Table I – Rates and Adjusted Hazard Ratio of Ischemic Events in Placebo Patients with PAD vs no PAD

	Symptomatic PAD N (2.5 yr KM rate) n=1,784	No Symptomatic PAD N (2.5 yr KM rate) n=11,996	Adjusted HR (95% CI)	P-value
Primary composite endpoint	257 (16.8)	1,306 (12.1%)	1.57 (1.36-1.80)	<0.001
Key Secondary	195 (13.0%)	818 (7.6%)	1.81 (1.53-2.14)	<0.001
Cardiovascular death	55 (3.8%)	185 (1.7%)	2.04 (1.48-2.82)	<0.001
Myocardial Infarction	115 (7.9%)	524 (4.9%)	1.86 (1.50 – 2.30)	<0.001
Stroke	50 (3.1%)	212 (2.0%)	1.52 (1.09-2.11)	0.013
Coronary revascularization	142 (9.6%)	823 (7.7%)	1.45 (1.19-1.75)	<0.001
All cause mortality	97 (6.7%)	9 (3.0%)	1.94 (1.52-2.47)	<0.001
MALE	40 (2.4%)	19 (0.2%)	11.67 (6.25-21.79)	<0.001
ALI or major amputation	25 (1.5%)	15 (0.1%)	7.88 (3.67 – 16.92)	<0.001
ALI	18 (1.1%)	15 (0.1%)	5.92 (2.59-13.53)	<0.001
Major amputation	7 (0.4%)	0 (0.0%)	-	-
Urgent revascularization	20 (1.2%)	6 (0.1%)	22.35 (8.26 – 60.47)	<0.001
Any peripheral revascularization	201 (12.4%)	93 (0.9%)	14.78 (11.31 – 19.32)	<0.001
CVD, MI, Stroke, or MALE	228 (15.0%)	834 (7.8%)	2.05 (1.75 – 2.40)	<0.001

PEP – primary endpoint composite of CV death, myocardial infarction, stroke, hospitalization for unstable angina or coronary revascularization

Key Secondary – composite of CV death, myocardial infarction or stroke

MALE – composite of acute limb ischemia (ALI), major amputation (AKA or BKA), or urgent peripheral revascularization for ischemia

MI=myocardial infarction, AKA=above knee amputation, BKA=below knee amputation, ALI=acute limb ischemia

Adjusted for age (65 vs. >=65), sex, race (white vs. non-white), BMI, history of diabetes, history of hypertension, smoking status (never, current, former), eGFR (<=60 vs. >60), history of congestive heart failure, prior mi, history of CABG or PCI, and history of non-hemorrhagic stroke or TIA

Supplemental Table II. Safety of Evolocumab in Patients with Peripheral Artery Disease

	Placebo N=1,780	Evolocumab N=1,856
Adverse events, n (%)		
Any	1,408 (79.1%)	1,481 (79.8%)
Serious	624 (35.1%)	601 (32.4%)
Thought to be related to the study agent and leading to discontinuation of study regimen	27 (1.5%)	24 (1.3%)
Injection-site reaction	32 (1.8%)	26 (1.4%)
Allergic reaction	47 (2.6%)	54 (2.9%)
Muscle-related event	79 (4.4%)	94 (5.1%)
Rhabdomyolysis	1 (0.1%)	2 (0.1%)
Cataract	43 (2.4%)	24 (1.3%)
Adjudicated case of new-onset diabetes*	67 (6.7%)	80 (8.3%)
Neurocognitive event	31 (1.7%)	28 (1.5%)
Laboratory results, n (%)**		
Aminotransferase level >3 times the upper limit of the normal range	31 (1.8%)	27 (1.5%)
Creatine Kinase level >5 times the upper limit of the normal range	15 (0.9%)	5 (0.3%)

Note: P-value was calculated by chi-square tests

All p-values > 0.05 except nominal p=0.012 for cataracts and 0.020 for CK>5

*denominator for new-onset diabetes is 996 for Placebo and 963 for Evolocumab**denominator for lab results is 1747 for Placebo and 1812 for Evolocumab

Supplemental Figure Legends

Supplemental Figure I –

Primary and Key Secondary Endpoints in Placebo Patients with and without Peripheral Artery Disease

Figure left, the primary composite endpoint of cardiovascular death, myocardial infarction, stroke, unstable angina, or coronary revascularization in patients with (orange solid line) and without (black line) symptomatic PAD. Figure right, the key secondary composite endpoint of cardiovascular death, myocardial infarction or stroke in patients with (orange solid line) and without (black line) symptomatic PAD. Analyses adjusted for age (≤ 65 vs. > 65 years), sex, race (white vs. non-white), BMI, history of diabetes, history of hypertension, smoking status, eGFR (≤ 60 vs. > 60), history of CHF, prior MI, history of CABG or PCI, and history of stroke or TIA.

Supplemental Figure II –

Major Adverse Cardiovascular Events in Placebo Patients by Disease State

The composite endpoint of cardiovascular death, myocardial infarction or stroke in patients with symptomatic lower extremity peripheral artery disease plus prior MI or stroke (red line), patients with symptomatic lower extremity peripheral artery disease without prior MI or stroke (yellow line), and patients with no known peripheral artery disease but prior MI or stroke (black line).

Supplemental Figure III –

Major Adverse Cardiovascular and Limb Events in Placebo Patients by Disease State

Kaplan-Meier rates at 2.5 years of major cardiovascular (IIIA) and limb (IIIB) events in patients with symptomatic lower extremity symptomatic peripheral artery disease and no prior MI or stroke (yellow bars) and patients with prior MI or stroke and no lower extremity symptomatic peripheral artery disease (black bars).

Supplemental Figure IV –

LDL Cholesterol Lowering with Evolocumab in Patients with Peripheral Artery Disease

LDL cholesterol at baseline and over time in patients with peripheral artery disease randomized to evolocumab (red) or placebo (blue).

Supplemental Figure V –

Major Cardiovascular and Limb Events with Evolocumab vs. Placebo in Patients with Peripheral Artery Disease and no prior MI or Stroke

Cumulative incidence of the primary composite endpoint (VA) of cardiovascular death, myocardial infarction, stroke, unstable angina, or coronary revascularization, the key secondary composite endpoint (VB) of cardiovascular death, myocardial infarction or stroke, and major adverse limb events (MALE; acute limb ischemia, major amputation or urgent revascularization, VC) in patients randomized to evolocumab (red line) or placebo (blue line).

Supplemental Figure VI –

The Composite of Major Adverse Cardiovascular and Limb Events with Evolocumab vs. Placebo in Patients with Symptomatic PAD and no MI or Stroke

The composite of major adverse cardiovascular events (MACE; cardiovascular death, myocardial infarction or stroke) and major adverse limb events (MALE; acute limb ischemia, major amputation or urgent revascularization) by treatment (evolocumab in red, placebo in blue) in patients with symptomatic PAD and no prior MI or stroke.

Supplemental Figure VII –

Achieved LDL-C and Major Adverse Limb Events in Patients with Peripheral Artery Disease

Relationship between achieved LDL-C at 4 weeks and major adverse limb events (MALE; acute limb ischemia, major amputation or urgent revascularization) in patients with peripheral artery disease (left, $P=0.088$ for the beta coefficient) and those with peripheral artery disease without prior MI or stroke (right, $P=0.030$ for the beta coefficient). Analyses adjusted for age, BMI, LDL-C at baseline, male sex, race, randomized in North America, current smoker, and high intensity statin.

Supplemental Figure VIII –

Achieved LDL-C and Major Adverse Cardiovascular or Limb Events in Patients with Peripheral Artery Disease

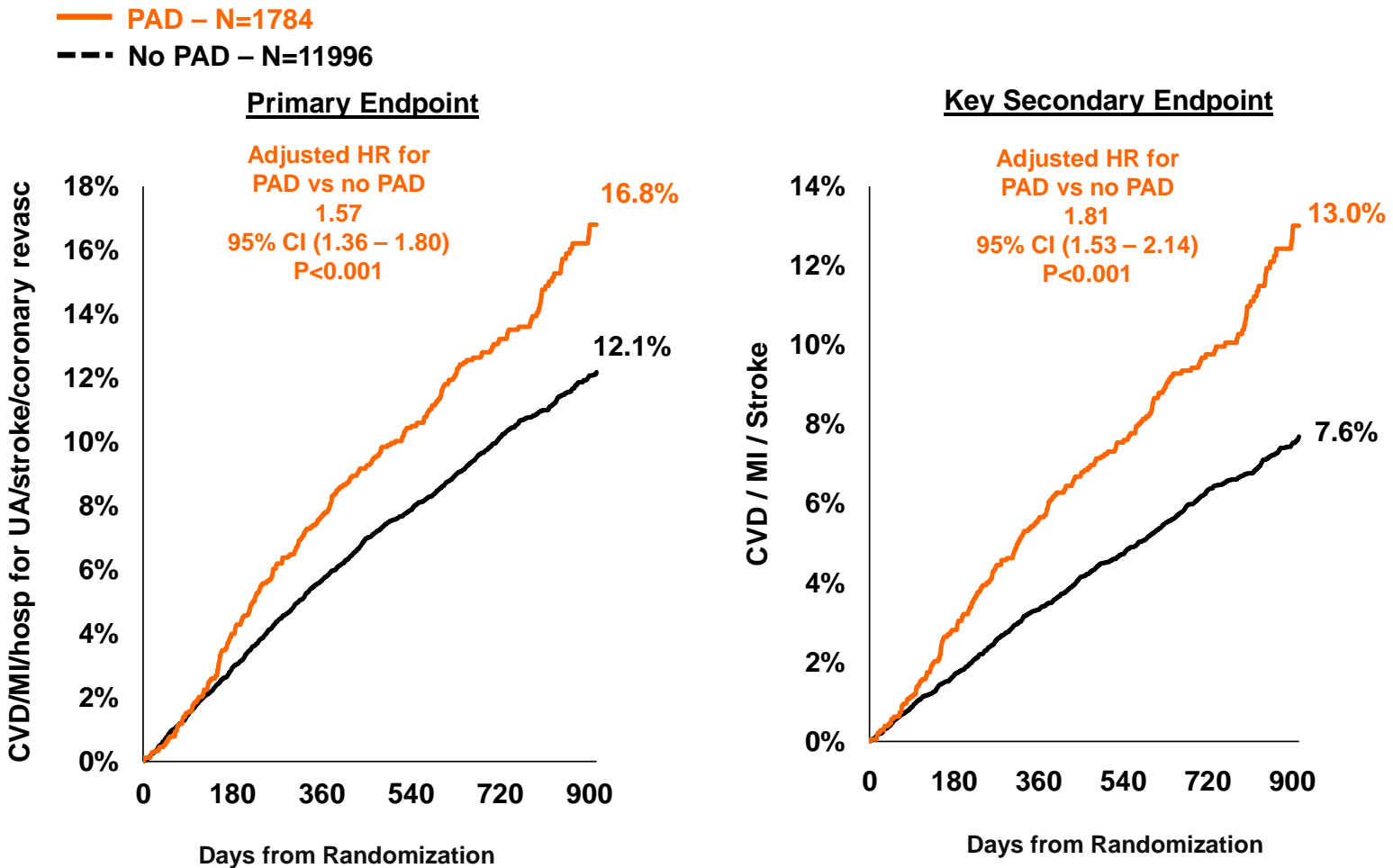
Relationship between achieved LDL-C at 4 weeks and the composite of major adverse cardiovascular events (MACE; cardiovascular death, myocardial infarction or stroke) or major adverse limb events (MALE; acute limb ischemia, major amputation or urgent revascularization) in patients with peripheral artery disease ($P=0.022$ for the beta coefficient). Analyses adjusted for age, BMI, LDL-C at baseline, male sex, race, randomized in North America, current smoker, and high intensity statin.

Supplemental Figure IX –

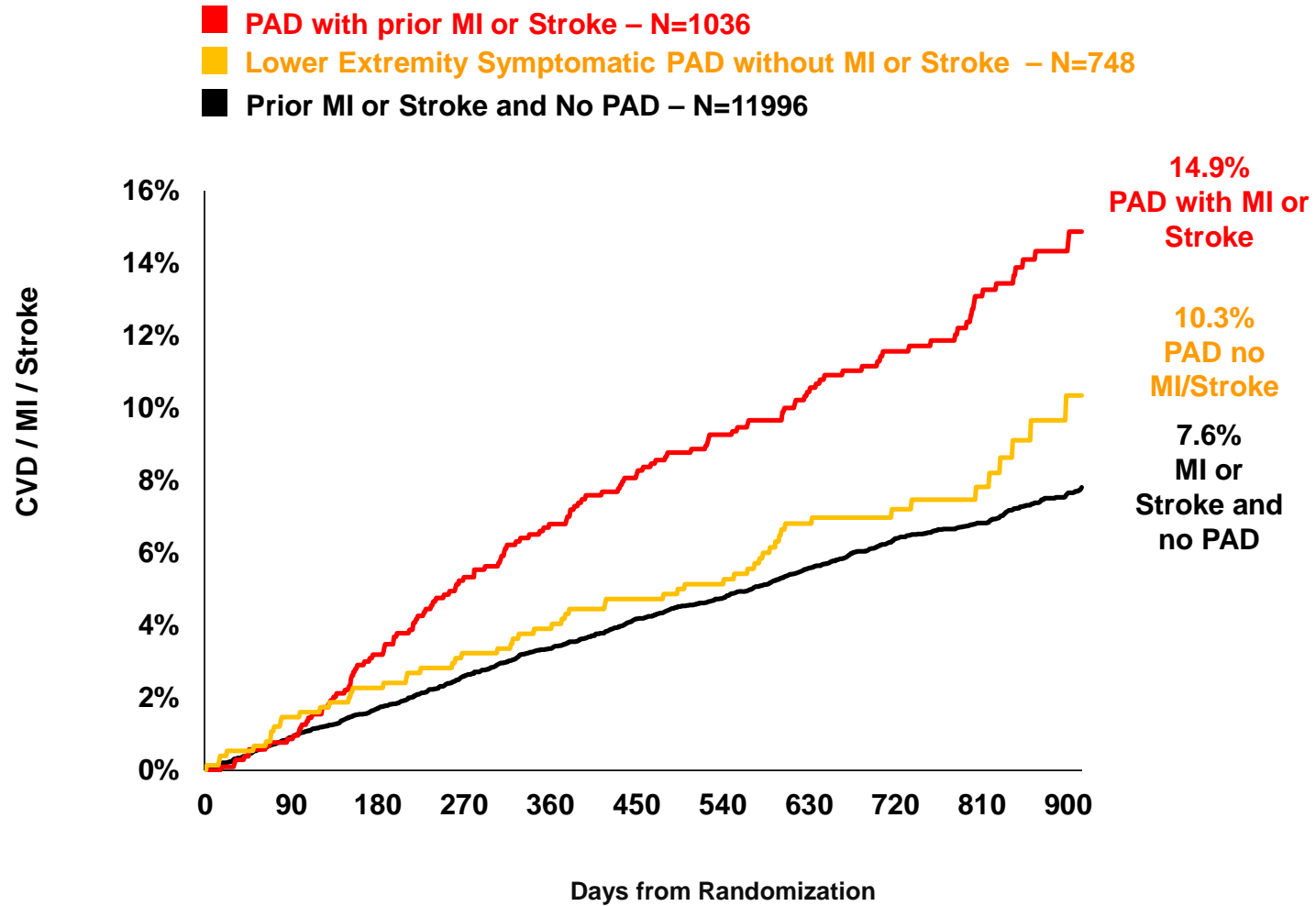
Achieved LDL-C and Major Adverse Cardiovascular or Limb Events in Patients with Peripheral Artery Disease and no Prior MI or Stroke

Relationship between achieved LDL-C at 4 weeks and the composite of major adverse cardiovascular events (MACE; cardiovascular death, myocardial infarction or stroke) or major adverse limb events (MALE; acute limb ischemia, major amputation or urgent revascularization) in patients with peripheral artery disease and no prior MI or stroke ($P=0.029$ for the beta coefficient). Analyses adjusted for age, BMI, LDL-C at baseline, male sex, race, randomized in North America, current smoker, and high intensity statin.

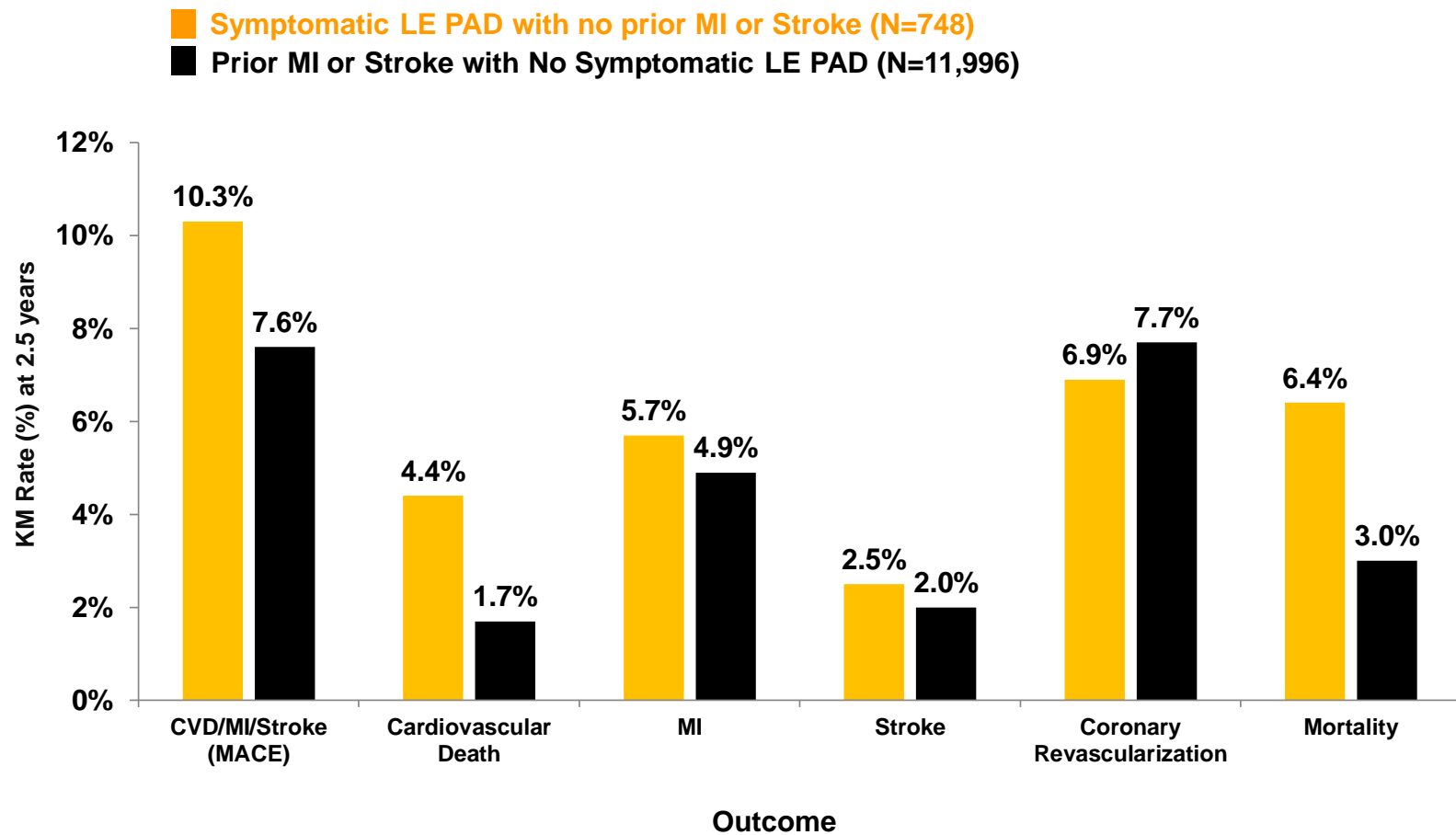
Primary and Key Secondary Endpoints in Placebo Patients with and without Peripheral Artery Disease



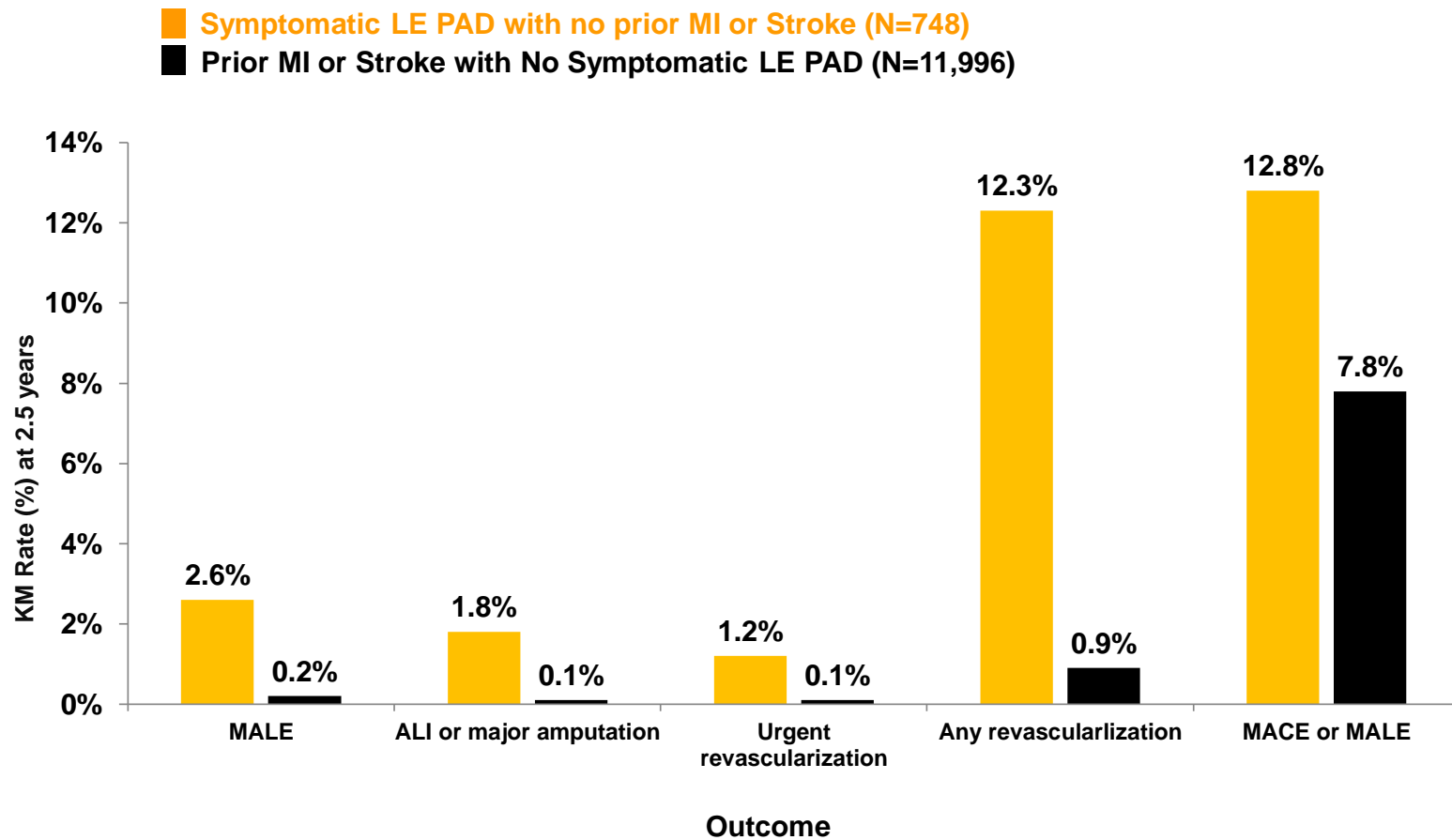
Major Adverse Cardiovascular Events in Placebo Patients by Disease State



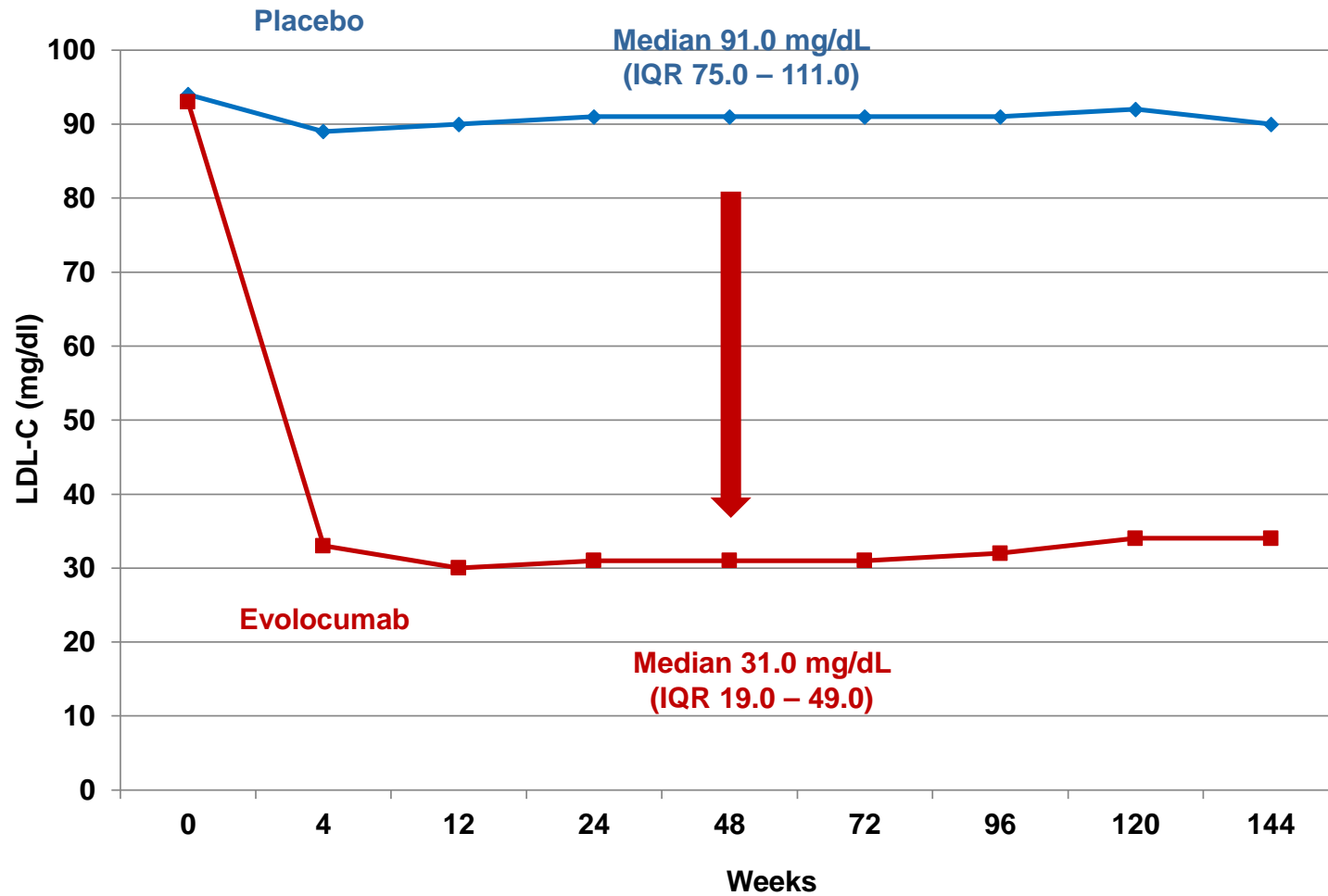
Major Adverse Cardiovascular Events in Placebo Patients by Disease State



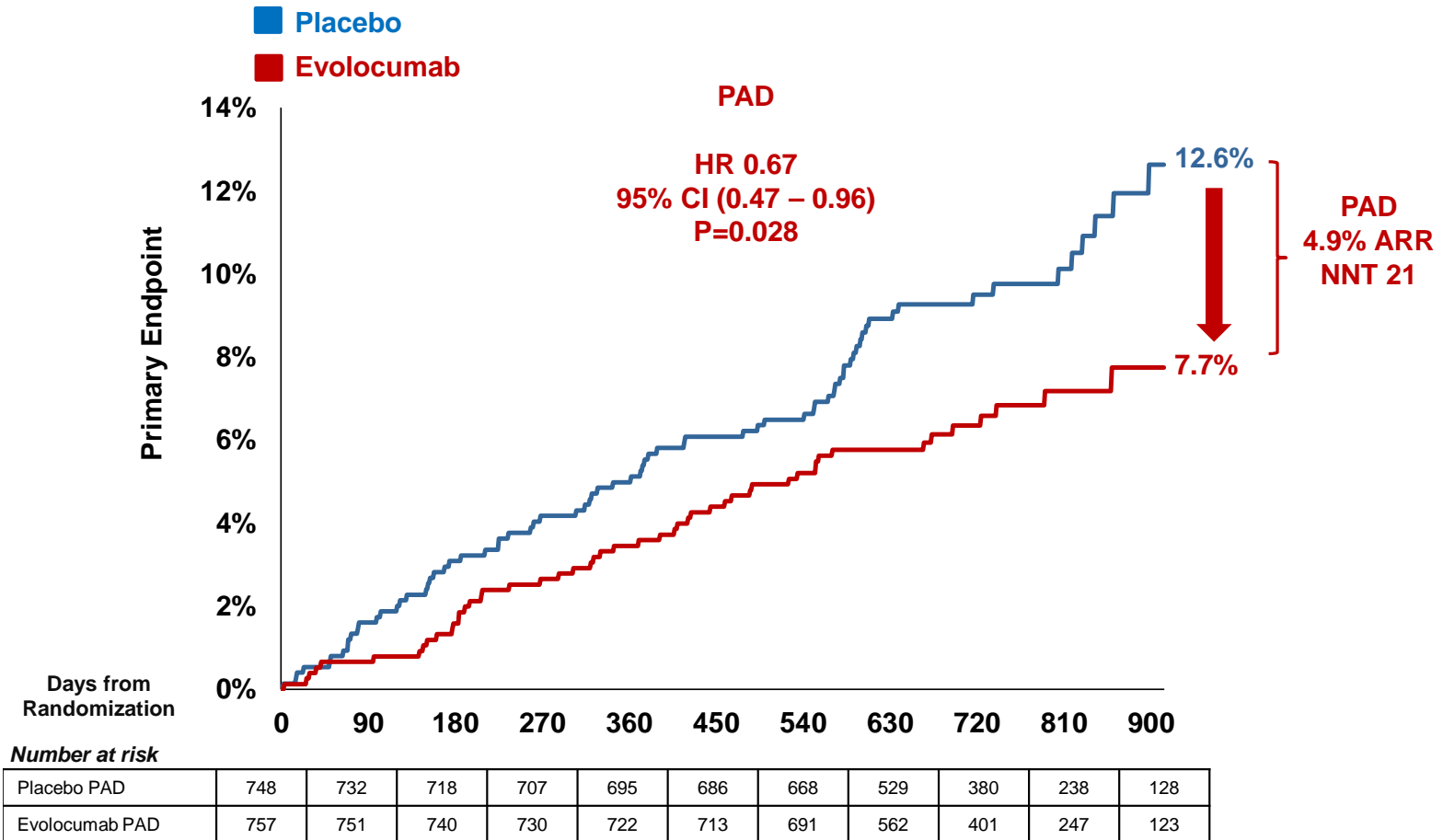
Major Adverse Limb Events in Placebo Patients by Disease State



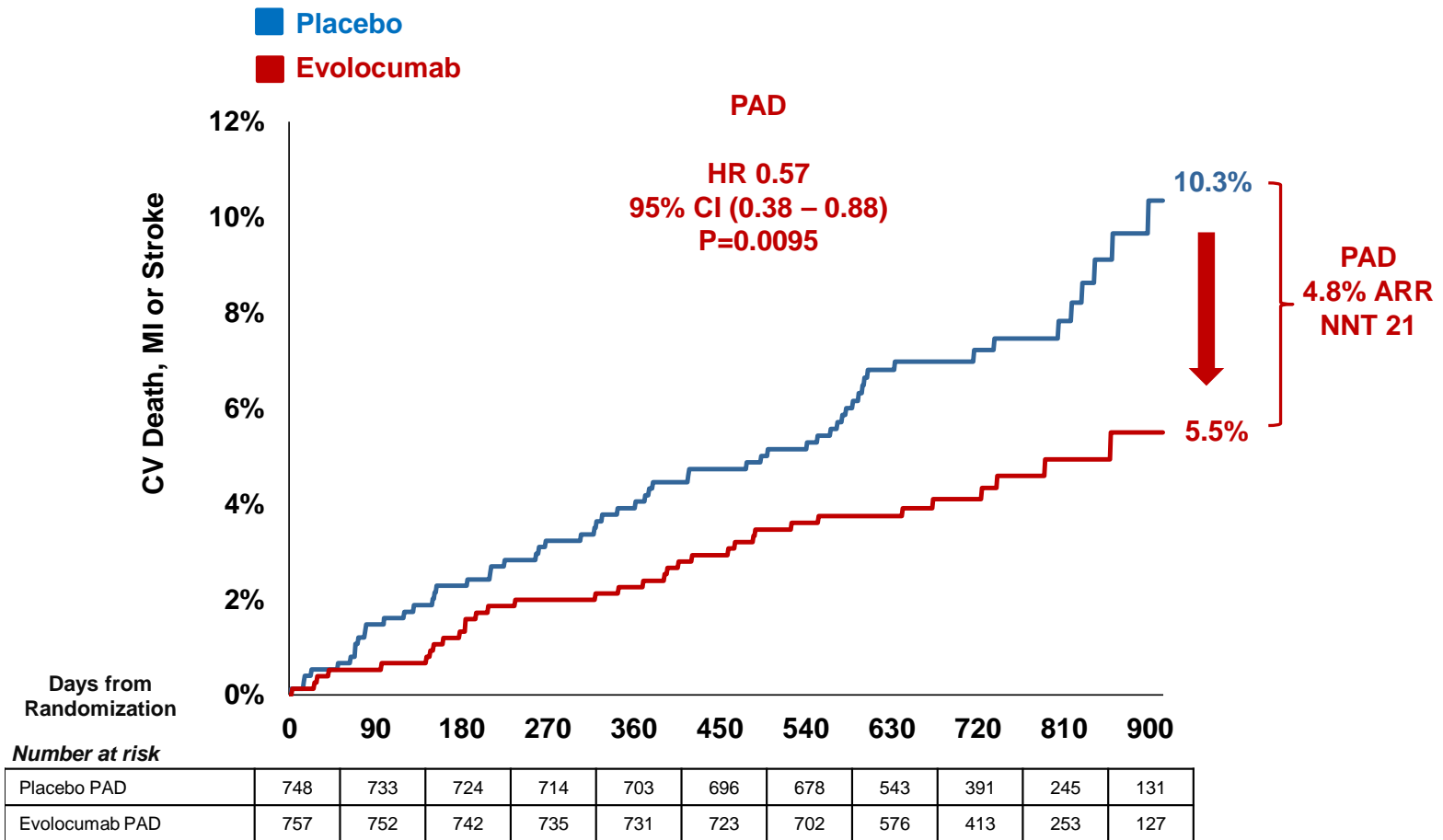
LDL Cholesterol Lowering with Evolocumab in Patients with Peripheral Artery Disease



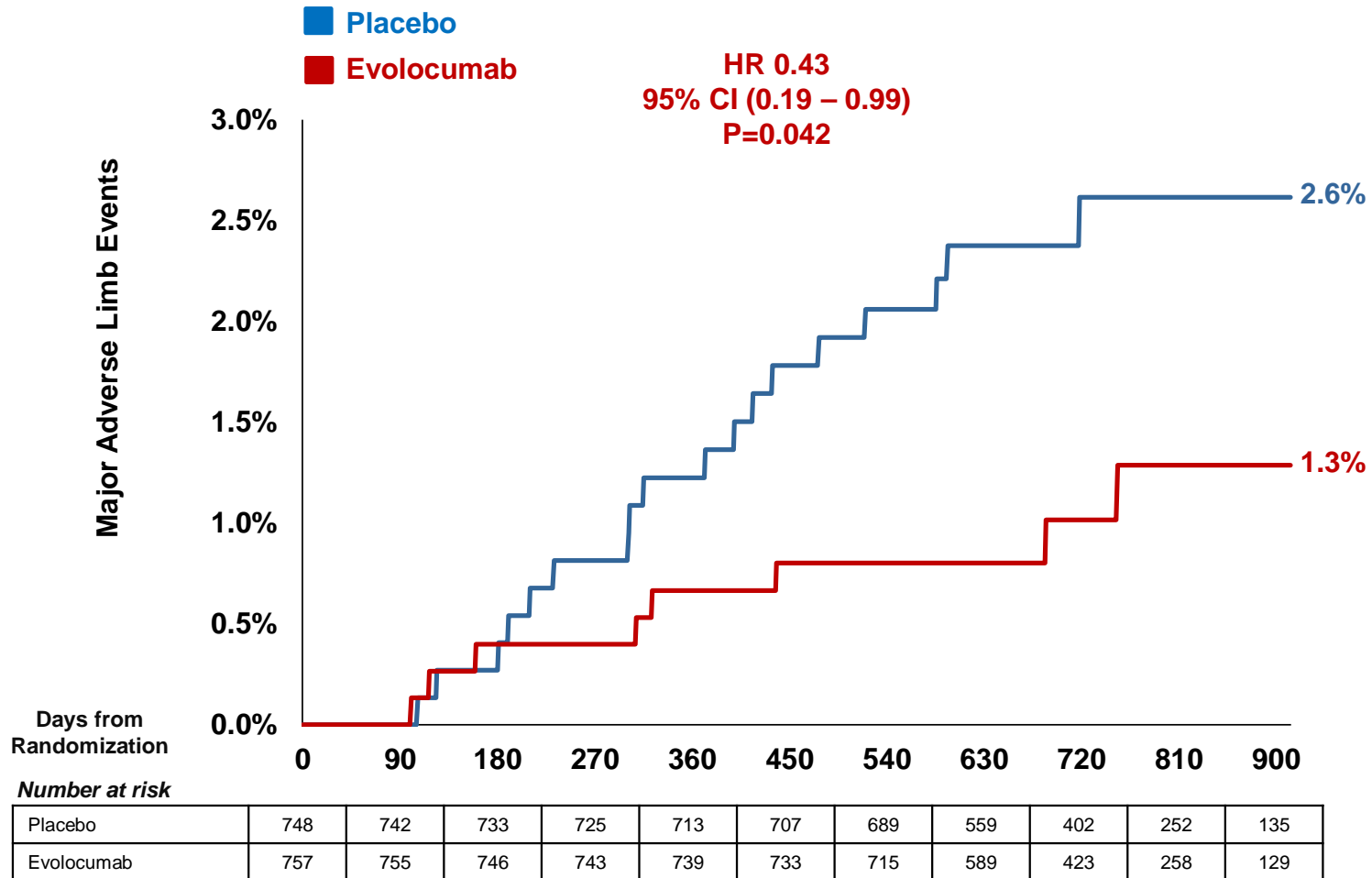
Primary Endpoint with Evolocumab vs. Placebo in Patients with Peripheral Artery Disease and no prior MI or Stroke



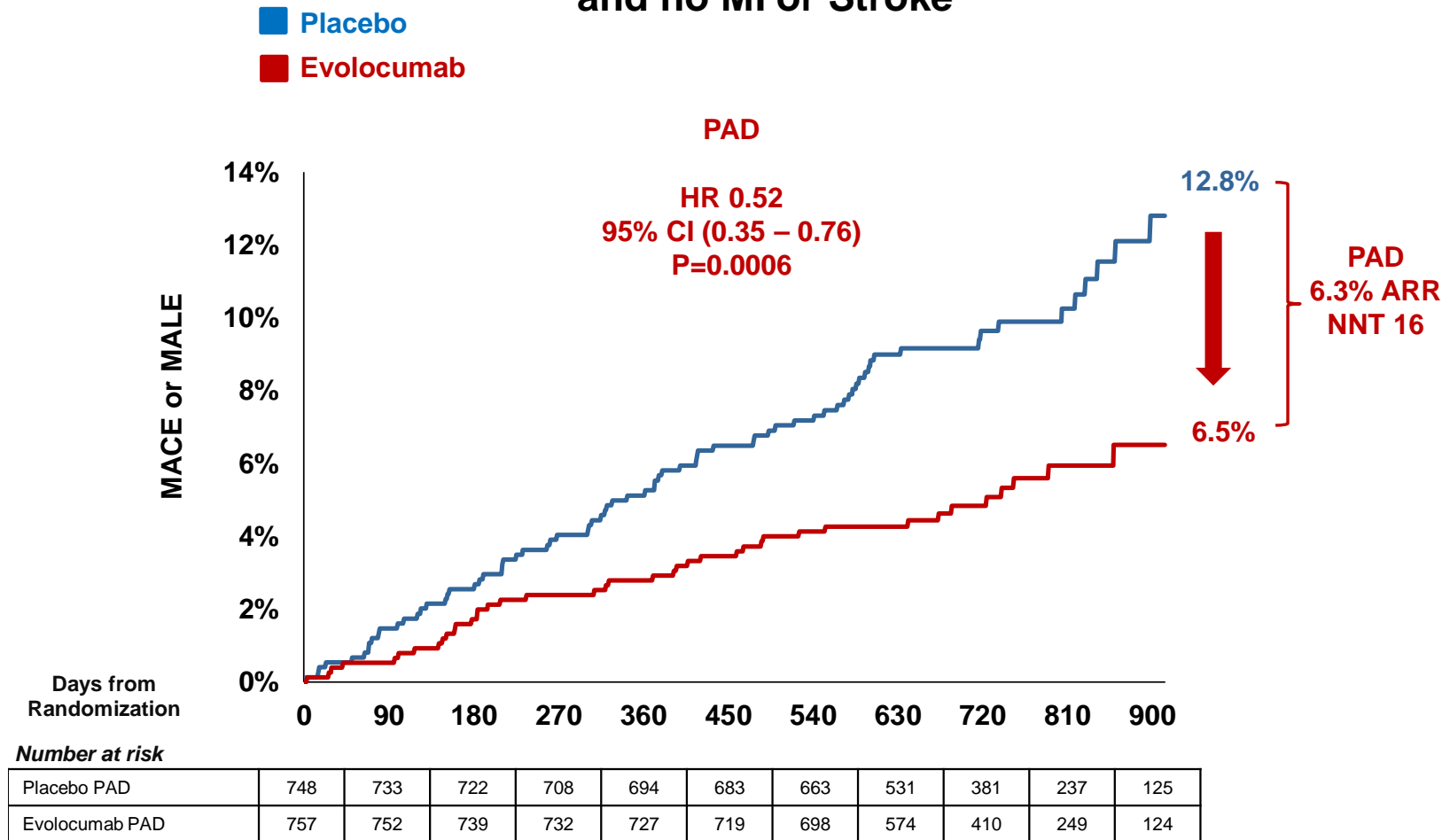
Key Secondary Endpoint with Evolocumab vs. Placebo in Patients with Peripheral Artery Disease and no prior MI or Stroke



Major Adverse Limb Events with Evolocumab vs. Placebo in Patients with Peripheral Artery Disease and no prior MI or Stroke

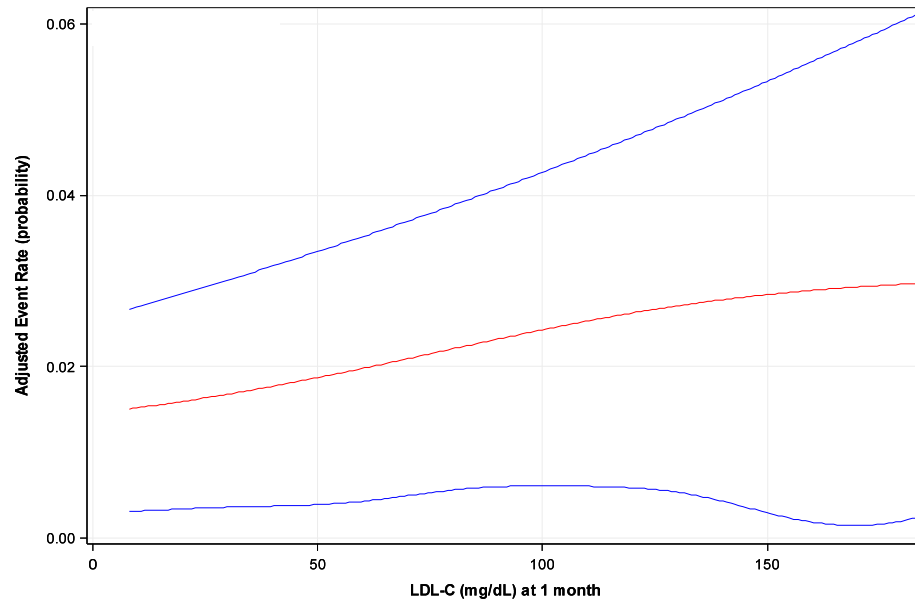


The Composite of Major Adverse Cardiovascular and Limb Events with Evolocumab vs. Placebo in Patients with Symptomatic PAD and no MI or Stroke

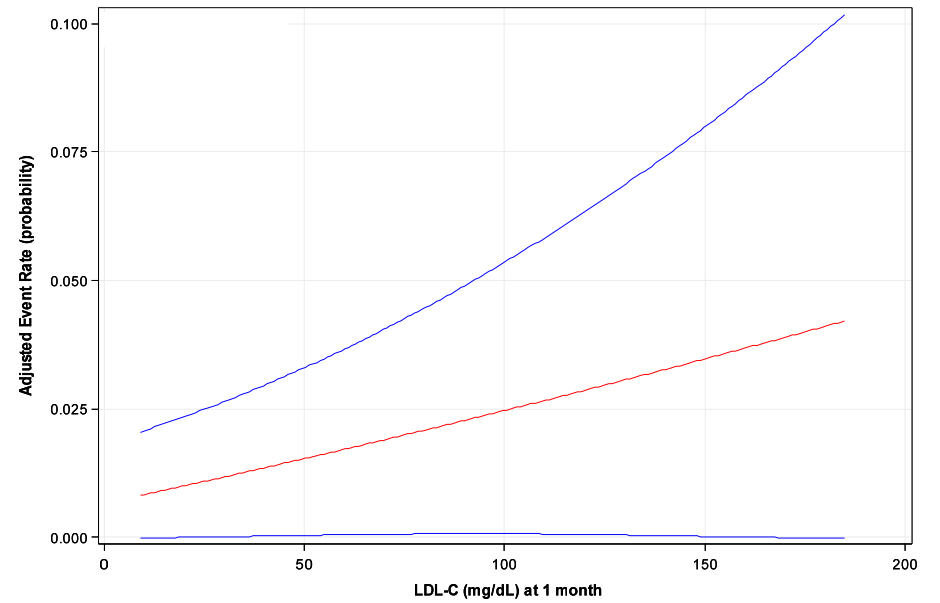


Achieved LDL-C and Major Adverse Limb Events in Patients with Peripheral Artery Disease

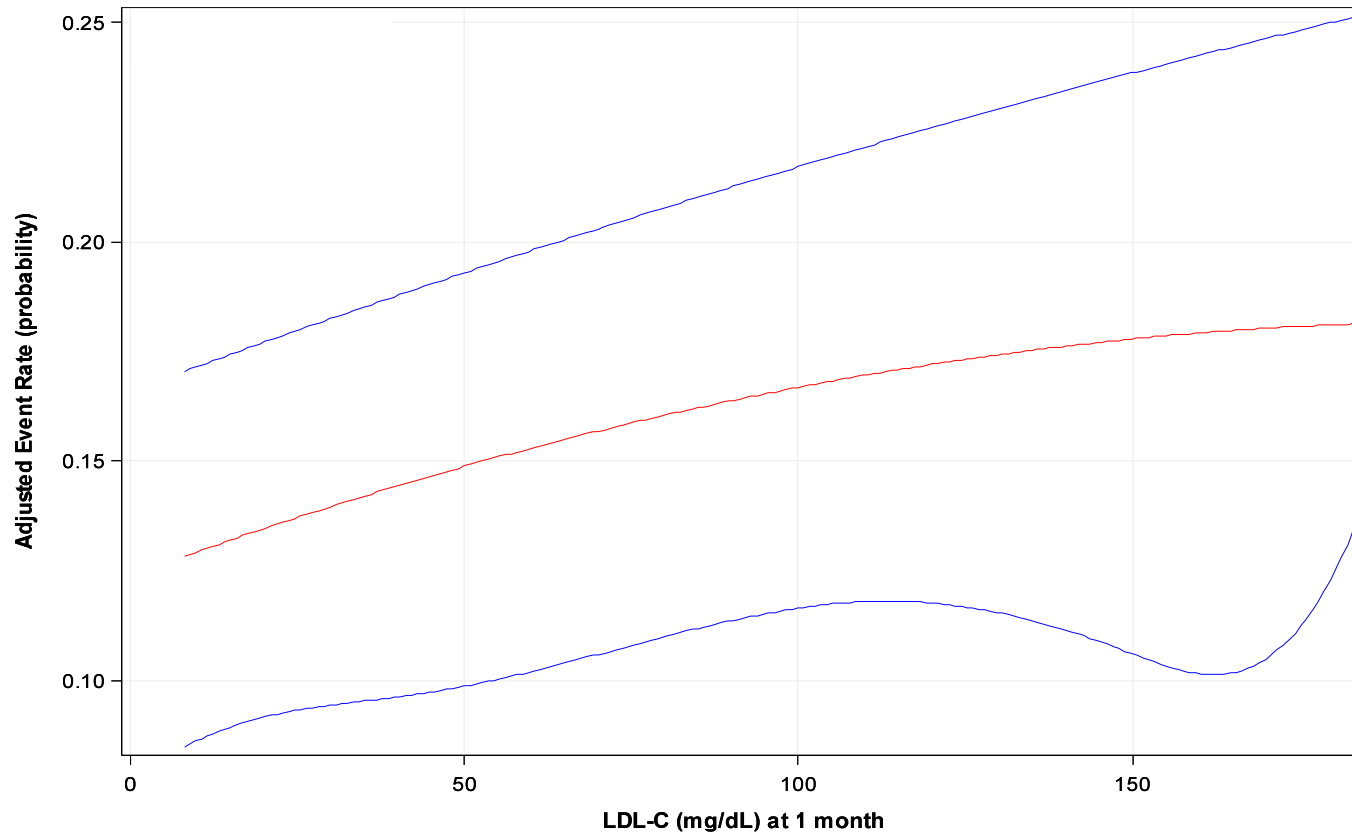
Patients with PAD



Patients with PAD and no MI or Stroke



Achieved LDL-C and Major Adverse Cardiovascular or Limb Events in Patients with Peripheral Artery Disease



Achieved LDL-C and Major Adverse Cardiovascular or Limb Events in Patients with Peripheral Artery Disease and no Prior MI or Stroke

